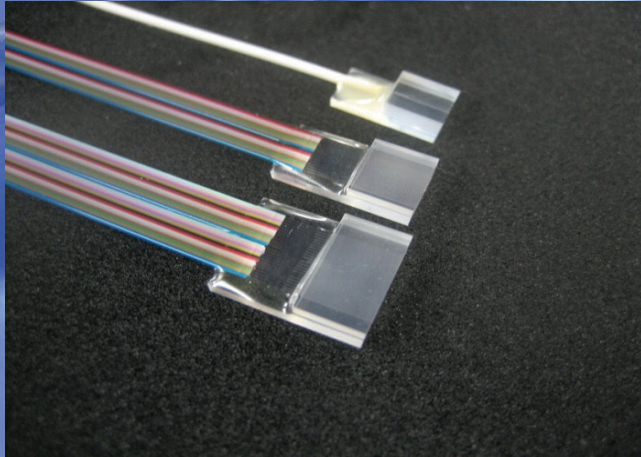




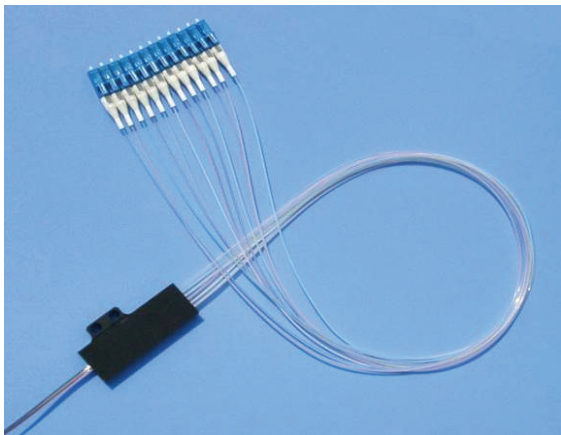
SEIKOH GIKEN



Fiber Array

■ Features

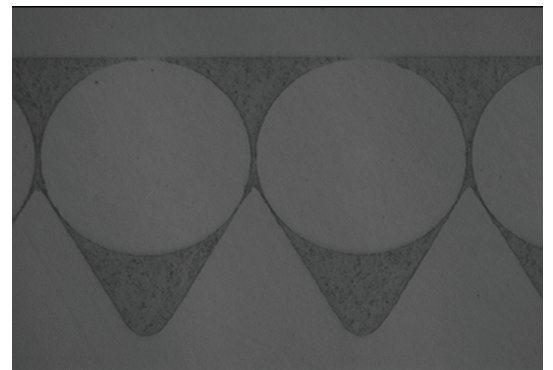
- High quality and reliability proven by Telcordia GR-1221 & 1209 testing
 - Extended Humidity 85degC/85% to 2000hrs
 - Extended Thermal Cycle -40 to 85degC to 500 cycles
 - Fiber / Cable Retention meets or exceeds industry standards
 - HAST 110degC/90%/1.3atm 300hrs
- Expert polishing technology using Seikoh Giken's proprietary technology
- Guarantee accurate core pitch position and measurement system
- Attractive cost performance by China fabrication - ISO 9001 certified
- Flexible design capabilities to meet customer supplied requirements
- Fanout assembly with world-class connectorization technology



■ Specifications

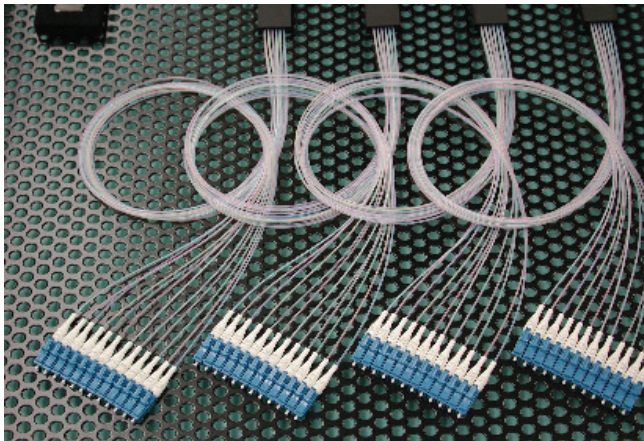
Material	Tempax, Pyrex & Quartz
Channel (ch.)	1, 4, 8, 12, 16, 24, 32, 48
Pitch (um)	250, 127
Core Pitch Accuracy (mm)	$\leq \pm 1 \mu\text{m}$ (Typical $\pm 0.5 \mu\text{m}$)
Fiber	SMF-28 equivalent, ϕ 0.9 single fiber Ribbon (4, 8, 12)
Polishing Angle (deg.)	90, 98, 82

■ Endface

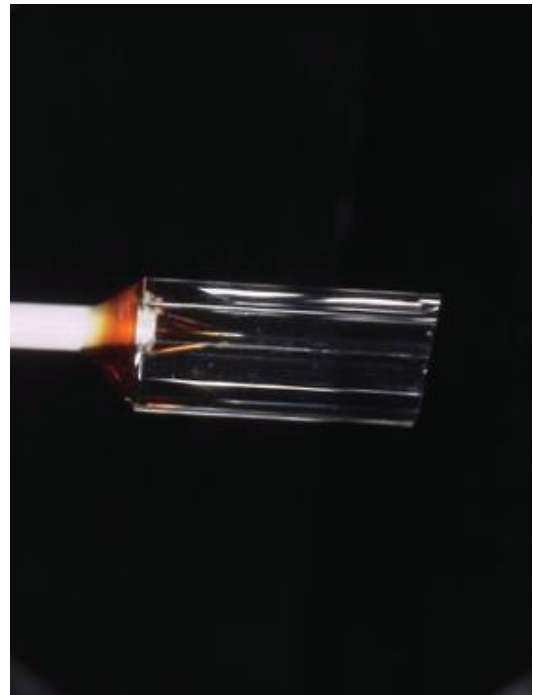
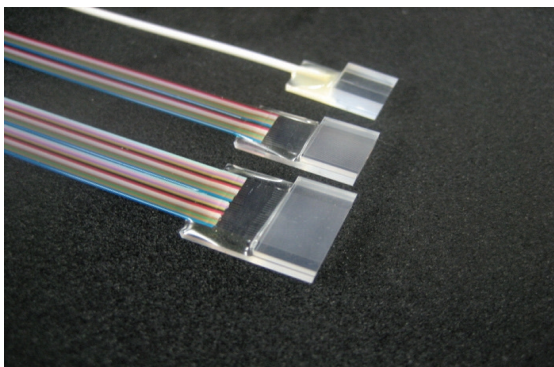


■ Dimensions

Ch	Core Pitch (um)	Chip Width (mm)	Chip Length (mm)	Chip Thickness (mm)
1	---	4.5+/-0.2	10.0+/-0.5	3.0+/-0.2
8	250+/-0.5	5.0+/-0.2	10.0+/-0.5	
	127+/-0.5	2.5+/-0.2	12.0/-0.5	
16	250+/-0.5	5.6+/-0.2	10.0/-0.5	
	127+/-0.5	5.0+/-0.2	12.0+/-0.5	
32	250+/-0.5	11.5+/-0.2	10.0+/-0.5	
	127+/-0.5	5.6+/-0.2	12.0+/-0.5	
48	250+/-0.5	16.0+/-0.2	10.0+/-0.5	
	127+/-0.5	9.0+/-0.2	12.0+/-0.5	



1ch Glass Pigtail as alternative solution of 1ch fiber array



WORLDWIDE SUBSIDIARIES AND SALES OFFICES:

North America

SEIKOH GIKEN USA, Inc.

Atlanta, Georgia
 Tel: +1-770-279-6602
 Fax: +1-770-279-8839
www.seikohgiken.com
sales@sg-usa.com

Europe

SEIKOH GIKEN Europe GmbH

Frankfurt, Germany
 Tel: +49-6102-297-701
 Fax: +45-6102-297-750
www.seikohgiken.com
jan.vajas@sg-euro.de

Asia

SEIKOH GIKEN Hong Kong Co.,Ltd.

Kowloon, Hong Kong
 Tel: +852-26206551
 Fax: +852-26206525
www.seikoh-giken.co.jp
sales.div@seikoh-giken.co.jp