

SAP-1 Series

FC HOUSING

TECHNICAL SPECIFICATIONS



SEIKOH GIKEN Co.,Ltd.
Fiber Optic Products Division
296-1, MATSUHIDAI, MATSUDO-SHI,
CHIBA, 270-2214 JAPAN.
TEL: +81-47-388-6111 FAX: +81-47-388-4477

SAP-1 Series FC HOUSING
TECHNICAL SPECIFICATIONS

NAE63D01 "SAP-1 Part"	May	1986
NCD-5DB2-01	December	1995
NCD-5DB2-02	July	1996
NCD-5DB2-03	June	1999
NCD-5DB2-04	April	2000
S05-H018-01E	July	2006
S05-H018-02E	February	2009

Copyright © 1986 - 2009 by **SEIKOH GIKEN Co.,Ltd.**
All right reserved.

The information contained herein shall not be reproduced or disclosed to any third party without the express written consent of SEIKOH GIKEN Co., Ltd.
The specifications contained herein are subject to change without notice.

Please address any questions, comments, and suggestions to:

SEIKOH GIKEN USA, Inc.

Headquarters

4405 International Blvd., Suite B109
Norcross, GA 30093 U.S.A.
TEL: +1-770-279-6602 FAX: +1-770-279-8839

Western Field Office

21250 Hawthorne Boulevard, Suite 700
Torrance, CA 90503
TEL: +1-310-792-7450 FAX: +1-310-792-7451

SEIKOH GIKEN Europe GmbH

Siemensstrasse 9
D-63263 Neu-Isenburg, Germany
TEL: +49-6102-297-701
FAX: +49-6102-297-750

SEIKOH GIKEN Hong Kong Co.,Ltd.

Concordia Plaza 21/F Rm2111,
1 Science Museum Road, Tsim Sha Tsui East,
Kowloon, Hong Kong.
TEL: +852-26206551 FAX: +852-26206525

TABLE OF CONTENTS

Section	Page
1 SCOPE	1
2 PART NUMBER	1
3 GENERAL SPECIFICATIONS	2
3.1 Parts and Materials	2
3.2 Physical Dimensions	2
3.3 General Tolerance	3
3.4 Appearance	3
4 PACKING	3
5 IDENTIFICATION	3
6 HANDLING AND CARE	3
6.1 Conditions of Storage	3
6.2 Precautions of Use	3
6.3 Disposal	3

Table

Table 1	Part Number	1
Table 2	Parts and Materials	2
Table 3	General Tolerance	2

Figure

Figure 1	SAP-1 Series Housing	4
Figure 2 to 14	Dimensions of Parts	5 to 10

1 SCOPE

These specifications apply to the SAP-1 series FC housing supplied by SEIKOH GIKEN Co., Ltd.

2 PART NUMBER

Part number of the housing is shown in Table 1.

Table 1 Part Number

MODEL Number	TYPE Number							
SAP-1	1	3	0	A	4	0	0	G

Boot Color	
0	No Boot
1	Black
2	Red

Boot I.D. [mm], Marking	
00	No Boot
20	for ø 2 cord, No Marking
30	for ø 3 cord, No Marking

Cap	
0	No Cap
1	Black PVC Cap
3	White Plastic Cap
A	Black Ferrule Cap

Auxiliary digit	
00	G

Package	
0	Key-ring installed on frame, Bulk Package
1	Key-ring installed on frame, Main body tentatively assembled, Bulk Package
3	Key-ring un-installed on frame, Bulk Package
4	Key-ring un-installed on frame, Main body tentatively assembled, Bulk Package

3 GENERAL SPECIFICATIONS

3.1 Parts and Materials

Parts and the materials are shown in Table 2.

Table 2 Parts and Materials

No.	Part Name	Qty	Material	Notes
①	Frame	1	Stainless Steel	-
②	Key-ring	1	Beryllium Copper	-
③	Washer	1	Phosphor Bronze	Nickel Plating
④	Spring	1	Stainless Steel	-
⑤	Coupling Nut	1	Brass	Nickel Plating
⑥	Stopper	1	Brass	Nickel Plating
⑦	Bush	1	Brass	Nickel Plating
⑧	Holder	1	Brass	Nickel Plating
⑨-1	Boot	1	NBR + PVC	for ø 2 mm cord
⑨-2				for ø 3 mm cord
⑩-1	Cap	1	PP	Ferrule Cap, Black
⑩-2			PVC	PVC Cap, Black
⑩-3			PE	Plastic Cap, White

Note: Item on Table 2 corresponds to the item reference number on Figure 1 to 14.

3.2 Physical Dimensions

Figure 1 shows the SAP-1 series housing.

Figure 2 to 14 show the dimensions of the parts.

- In accordance with IEC 61754-13 Type FC-PC connector family.
- In accordance with JIS C 5970 F01 Type connectors.

3.3 General Tolerances

Permissible deviation in dimensions without tolerance indication is in accordance with ISO 2768-m (JIS B 0405-m), as shown in Table 3.

Table 3 General Tolerance (ISO 2768-m)

Basic size step [mm]		Permissible deviation [mm]
Over	Under	
0.5	3	±0.1
3	6	±0.1
6	30	±0.2
30	120	±0.3

3.4 Appearance

There should be no burr, peeling of plating or scratches that affect the product.

4 PACKING

The product is packed to prevent damage during shipment.

5 IDENTIFICATION

Identification label should indicate the part number and the lot number of the product(s) and should be permanently attached to the packing bag.

6 HANDLING AND CARE

6.1 Conditions of Storage

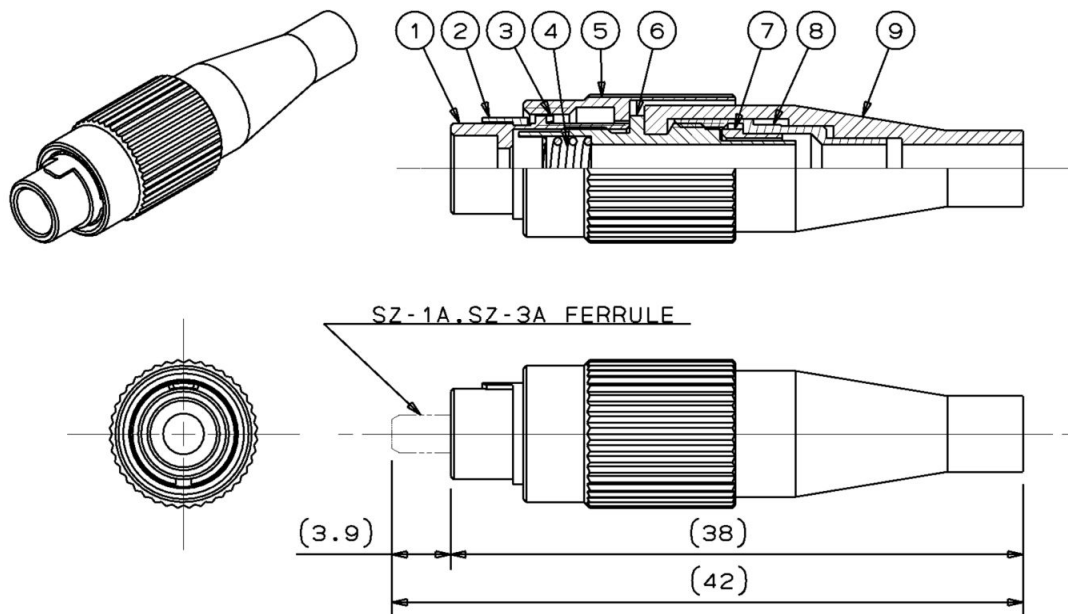
For storage of the product, keep in the packing bag and keep away from corrosive gas, high-temperature and humidity, extreme-low temperature and direct sunlight.

6.2 Precautions for Use

Contamination, oil, sweat and others debris on the ferrule end face may influence the performance of the product. If contamination is on the ferrule end face, wipe the end face with the end face cleaner.

6.3 Disposal

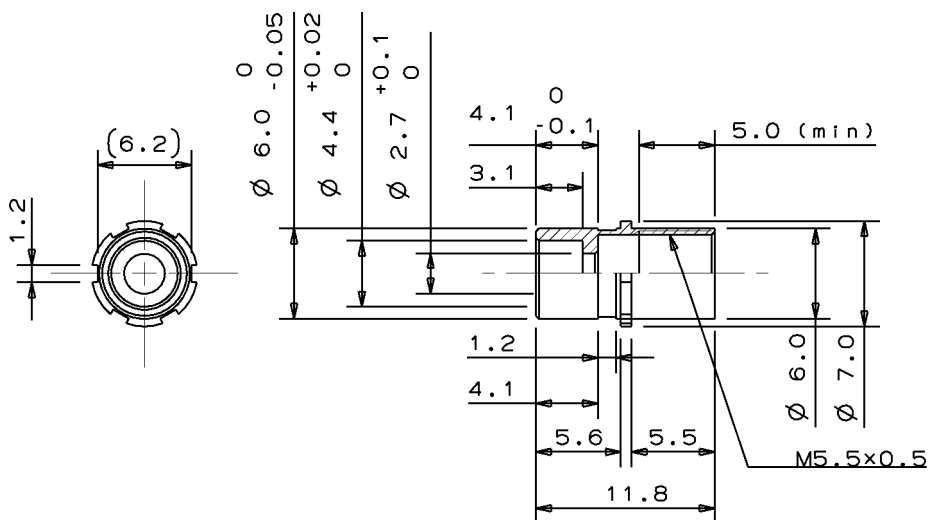
When discarding this product, please follow the regulations of your own country.



- Notes: 1 This drawing shows the tentatively assembled condition including a ferrule.
2 This drawing does not include the cap.
3 The ferrule is not included in SAP-1 housing.

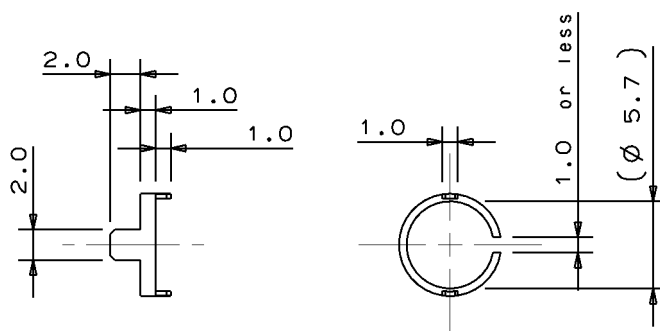
Unit: mm

Figure 1 SAP-1 Series Housing



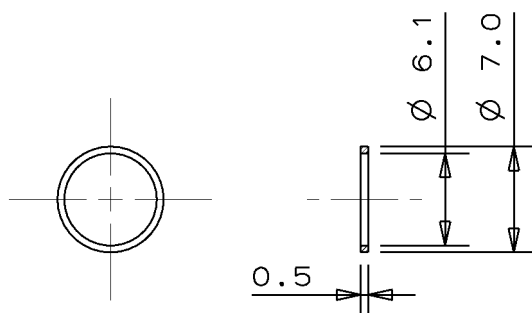
Unit: mm

Figure 2 ① Frame



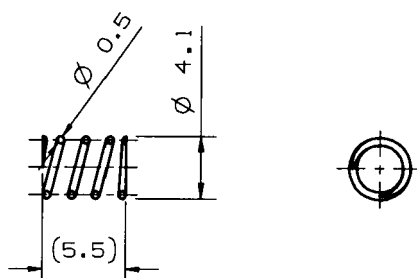
Unit: mm

Figure 3 ② Key-ring



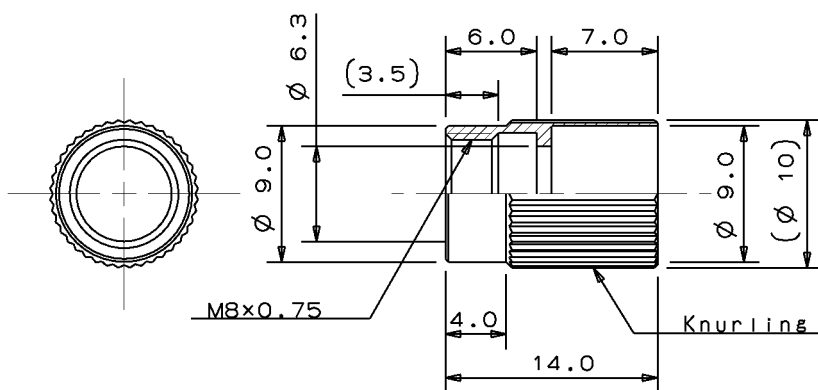
Unit: mm

Figure 4 ③ Washer



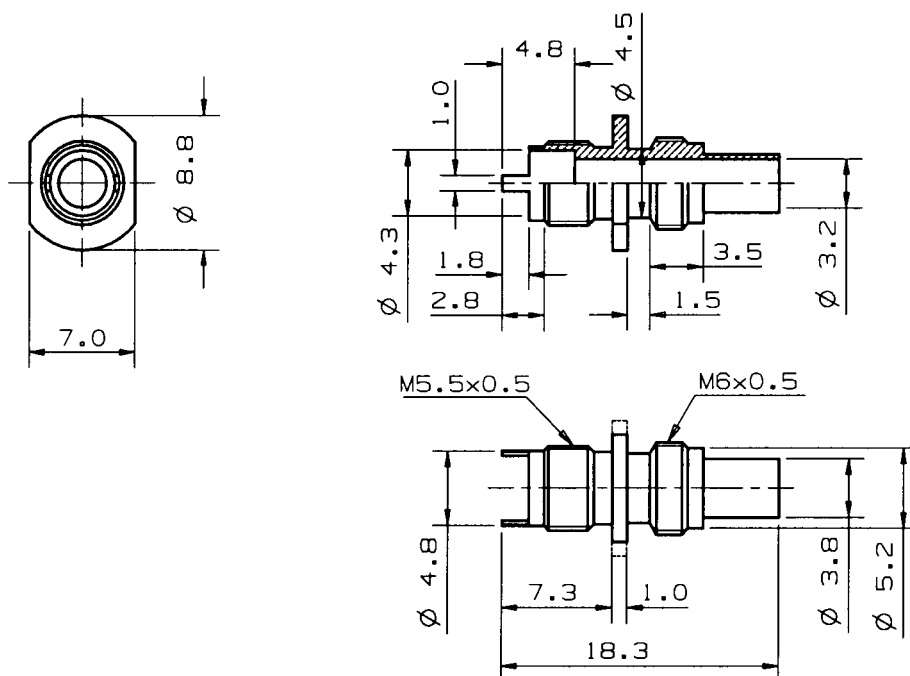
Unit: mm

Figure 5 ④ Spring



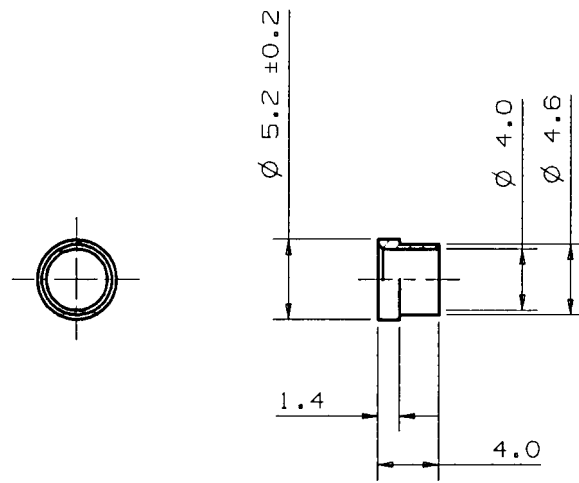
Unit: mm

Figure 6 ⑤ Coupling Nut



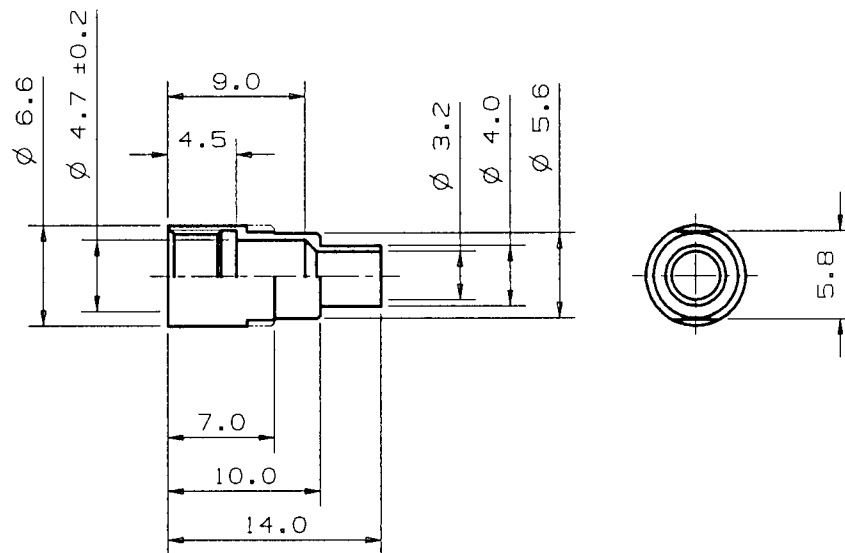
Unit: mm

Figure 7 ⑥ Stopper



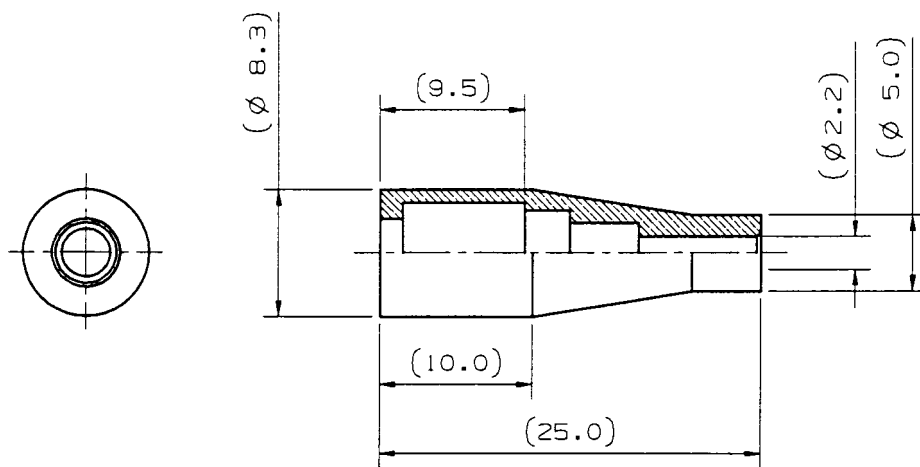
Unit: mm

Figure 8 ⑦ Bush



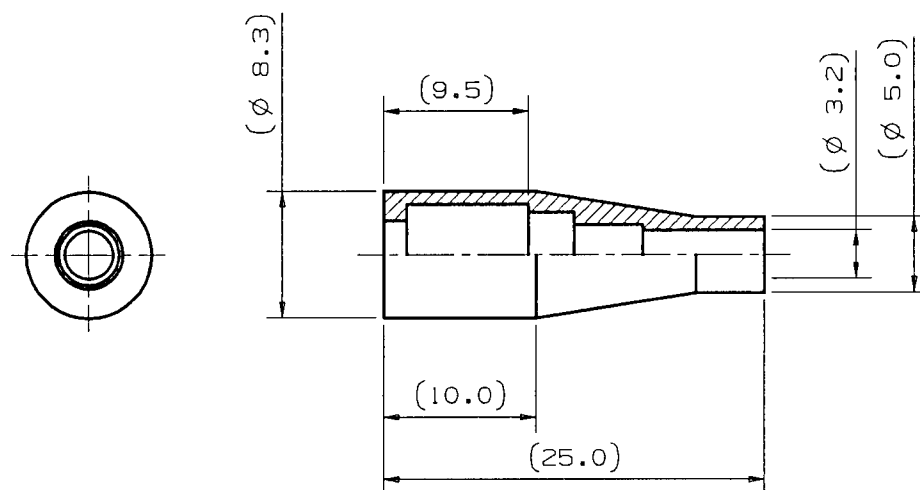
Unit: mm

Figure 9 ⑧ Holder



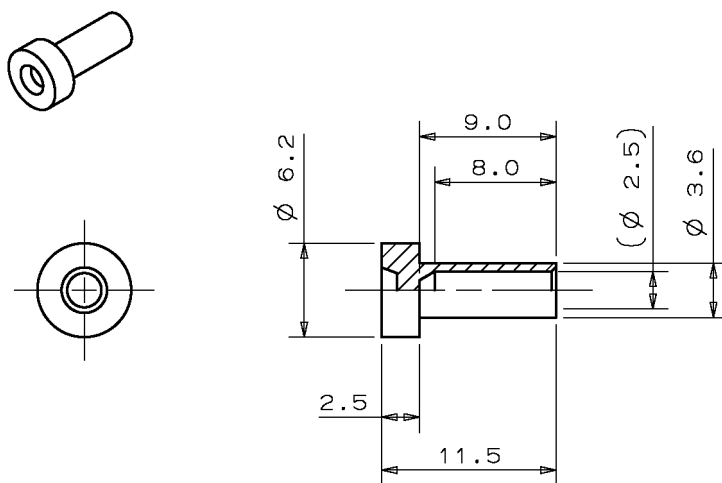
Unit: mm

Figure 10 ◎-1 Boot (for $\phi 2$ mm cord)



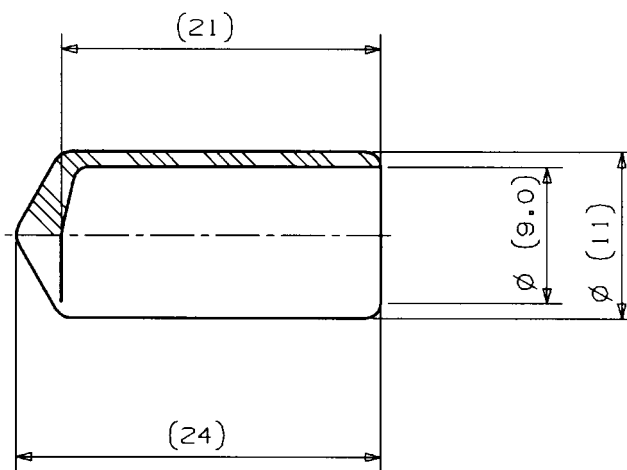
Unit: mm

Figure 11 ◎-2 Boot (for $\phi 3$ mm cord)



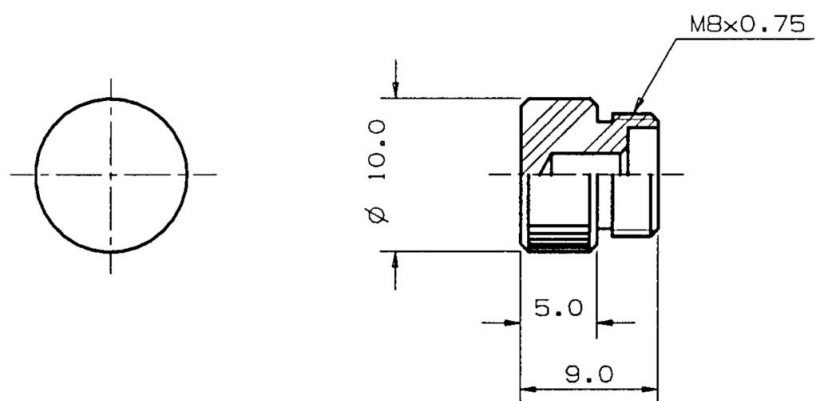
Unit: mm

Figure 12 ⑩-1 Cap (Ferrule Cap)



Unit: mm

Figure 13 ⑩-2 Cap (PVC Cap)



Unit: mm

Figure 14 ⑩-3 Cap (Plastic Cap)