

# **SAP-3 Series**

## **FC HOUSING**

- for PC/Angled-PC -

# **TECHNICAL SPECIFICATIONS**



**SEIKOH GIKEN Co.,Ltd.**  
**Fiber Optic Products Division**  
296-1, MATSUHIDAI, MATSUDO-SHI,  
CHIBA, 270-2214 JAPAN.  
TEL: +81-47-388-6111 FAX: +81-47-388-4477

**SAP-3 Series FC HOUSING - for PC/Angled-PC -  
TECHNICAL SPECIFICATIONS**

ACD-1NBE-01	January	2002
S05-H019-01E	July	2006
S05-H019-02E	February	2009
S05-H019-03E	January	2010
S05-H019-04E	October	2011

Copyright © 2002 - 2011 by **SEIKOH GIKEN Co.,Ltd.**  
All right reserved.

The information contained herein shall not be reproduced or disclosed to any third party without the express written consent of SEIKOH GIKEN Co., Ltd. The specifications and materials contained herein are subject to change without notice.

Please address any questions, comments, and suggestions to:

**SEIKOH GIKEN USA, Inc.**

4405 International Blvd., Suite B109  
Norcross, GA 30093 U.S.A.  
TEL: +1-770-279-6602  
FAX: +1-770-279-8839

**SEIKOH GIKEN Europe GmbH**

Siemensstrasse 9  
D-63263 Neu-Isenburg, Germany  
TEL: +49-6102-297-701  
FAX: +49-6102-297-750

**SEIKOH GIKEN Hangzhou Co.,Ltd.**

526 Binkang Road Binjiang District, Hangzhou,  
Zhejiang, China 310052, P.R. China  
TEL: +86-571-8777-4098  
FAX: +86-571-8777-4099

## TABLE OF CONTENTS

Section	Page
1. SCOPE .....	1
2. PART NUMBER .....	1
3 GENERAL SPECIFICATIONS.....	2
3.1 Parts and Materials .....	2
3.2 Physical Dimensions .....	2
3.3 General Tolerances .....	2
3.4 Appearance.....	3
4 PACKING .....	3
5 IDENTIFICATION .....	3
6 HANDLING AND CARE.....	3
6.1 Conditions of Storage .....	3
6.2 Precautions for Use .....	3
6.3 Disposal .....	3

### Table

Table 1 Part Number .....	1
Table 2 Parts and Materials .....	2
Table 3 General Tolerance (ISO 2768-m).....	3

### Figure

Figure 1 SAP-3 Series Housing (for PC application, $\varnothing$ 3 mm cord).....	4
Figure 2 SAP-3 Series Housing (for APC application, $\varnothing$ 3 mm cord) .....	5
Figure 3 SAP-3 Series Housing (for PC application, $\varnothing$ 2 mm cord).....	6
Figure 4 SAP-3 Series Housing (for APC application, $\varnothing$ 2 mm cord) .....	7
Figure 5 to 18 Dimensions of Parts .....	8



1. SCOPE

These specifications apply to the SAP-3 series FC housing - for PC/angled-PC - supplied by SEIKOH GIKEN Co., Ltd.

2. PART NUMBER

Part number of the housing is shown in Table 1.



Table 1 Part Number

MODEL Number	TYPE Number							
<b>SAP-3</b>	<b>5</b>	<b>6</b>	<b>1</b>	<b>A</b>	<b>0</b>	<b>D</b>	<b>1</b>	<b>G</b>

Boot Color	
1	Black
2	Red
3	White
5	Blue
7	Yellow
8	Green

Boot I.D. [mm] , Marking	
6 1	for ø 2 cord (Plastic), 
7 1	for ø 3 cord (Plastic), 

Auxiliary digit	
1	G

Specification	
D	N-type - Wide Key -
K	R-type - Narrow Key -

Package	
0	Bulk Package

Cap	
0	No Cap
1	Black PVC Cap
3	White Plastic Cap
8	Green PVC Cap
A	Black Ferrule Cap
B	Green Ferrule Cap

Please contact us for availability of other specifications.

### 3 GENERAL SPECIFICATIONS

#### 3.1 Parts and Materials

Parts and the materials are shown in Table 2.

Table 2 Parts and Materials

No.	Part Name	Qty	Material	Notes
①-1	Frame	1	Zinc Die-casting	Nickel Plating, N-type - Wide Key -
①-2				Nickel Plating, R-type - Narrow Key -
②	Spring	1	Stainless Steel	-
③	Coupling Nut	1	Brass	Nickel Plating
④	Stopper	1	Brass	Nickel Plating
⑤-1	Crimping Ring	1	Aluminum Alloy	for ø 3 mm cord
⑤-2				for ø 2 mm cord
⑥-1	Ring	1	Stainless Steel	for ø 3 mm cord
⑥-2				for ø 2 mm cord
⑦-1	Boot	1	TPEE	for ø 3 mm cord, Flammability UL94 V-0
⑦-2				for ø 2 mm cord, Flammability UL94 V-0
⑧-1	Cap	1	PP	Ferrule Cap
⑧-2			PVC	PVC Cap
⑧-3			PE	Plastic Cap, White

Note: Item on Table 2 corresponds to the item reference number on Figure 1 to 18.

#### 3.2 Physical Dimensions

Figure 1 to 4 show the SAP-3 series housing.

Figure 5 to 18 show the dimensions of the parts.

- In accordance with IEC 61754-13 Type FC-PC connector family.
- In accordance with JIS C 5970 F01 Type connectors.

#### 3.3 General Tolerances

Permissible deviation in dimensions without tolerance indication is in accordance with ISO 2768-m (JIS B 0405-m), as shown in Table 3.

Table 3 General Tolerance (ISO 2768-m)

Basic size step [mm]		Permissible deviation [mm]
Over	Under	
0.5	3	±0.1
3	6	±0.1
6	30	±0.2
30	120	±0.3

### 3.4 Appearance

There should be no burr, peeling of plating or scratches that affect the product.

## 4 PACKING

The product is packed to prevent damage during shipment.

## 5 IDENTIFICATION

Identification label should indicate the part number and the lot number of the product(s) and should be permanently attached to the packing bag.

## 6 HANDLING AND CARE

### 6.1 Conditions of Storage

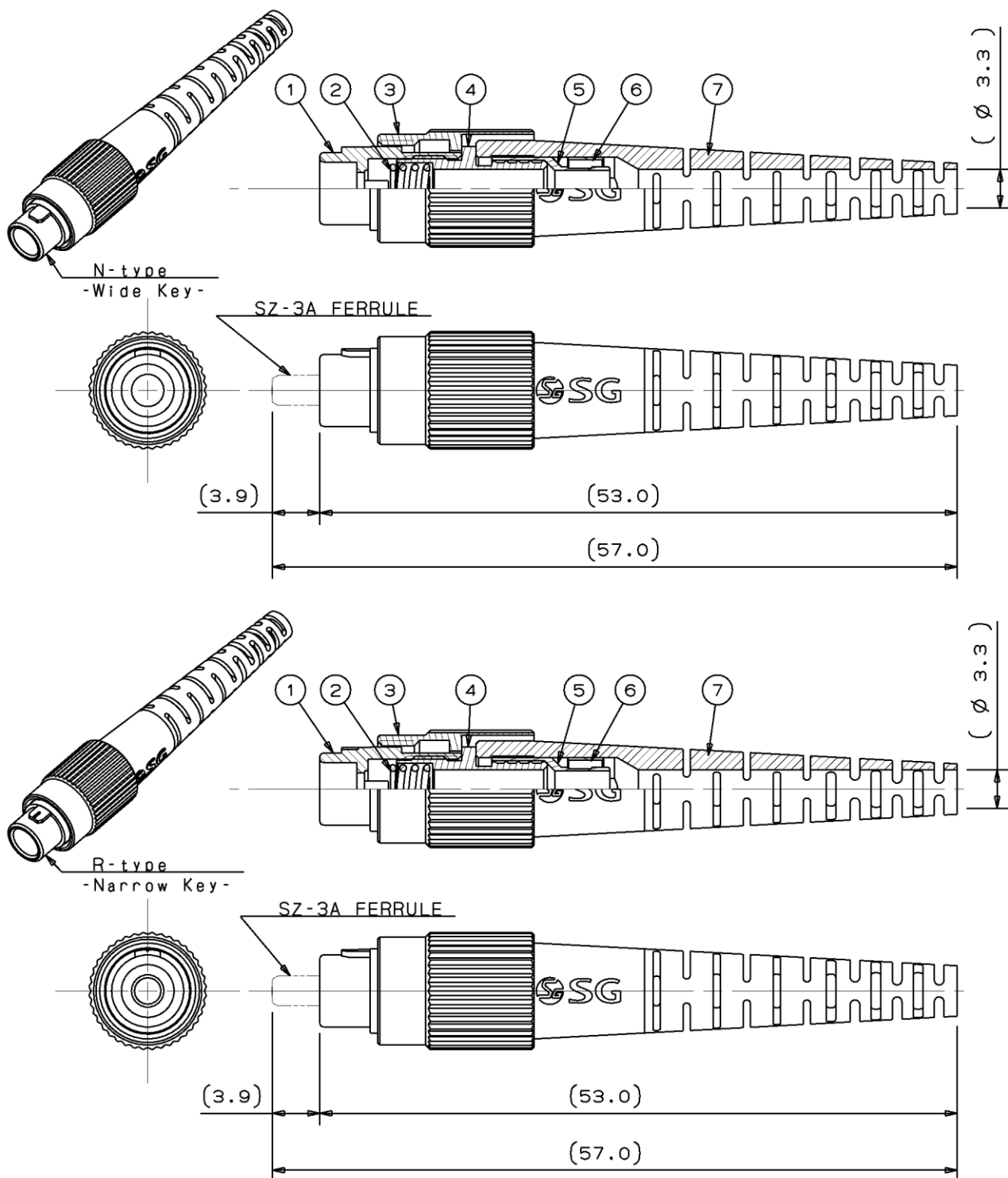
For storage of the product, keep in the packing bag and keep away from corrosive gas, high-temperature and humidity, extreme-low temperature and direct sunlight.

### 6.2 Precautions for Use

Contamination, oil, sweat and others debris on the ferrule end face may influence the performance of the product. If contamination is on the ferrule end face, wipe the end face with the end face cleaner.

### 6.3 Disposal

When discarding this product, please follow the regulations of your own country.

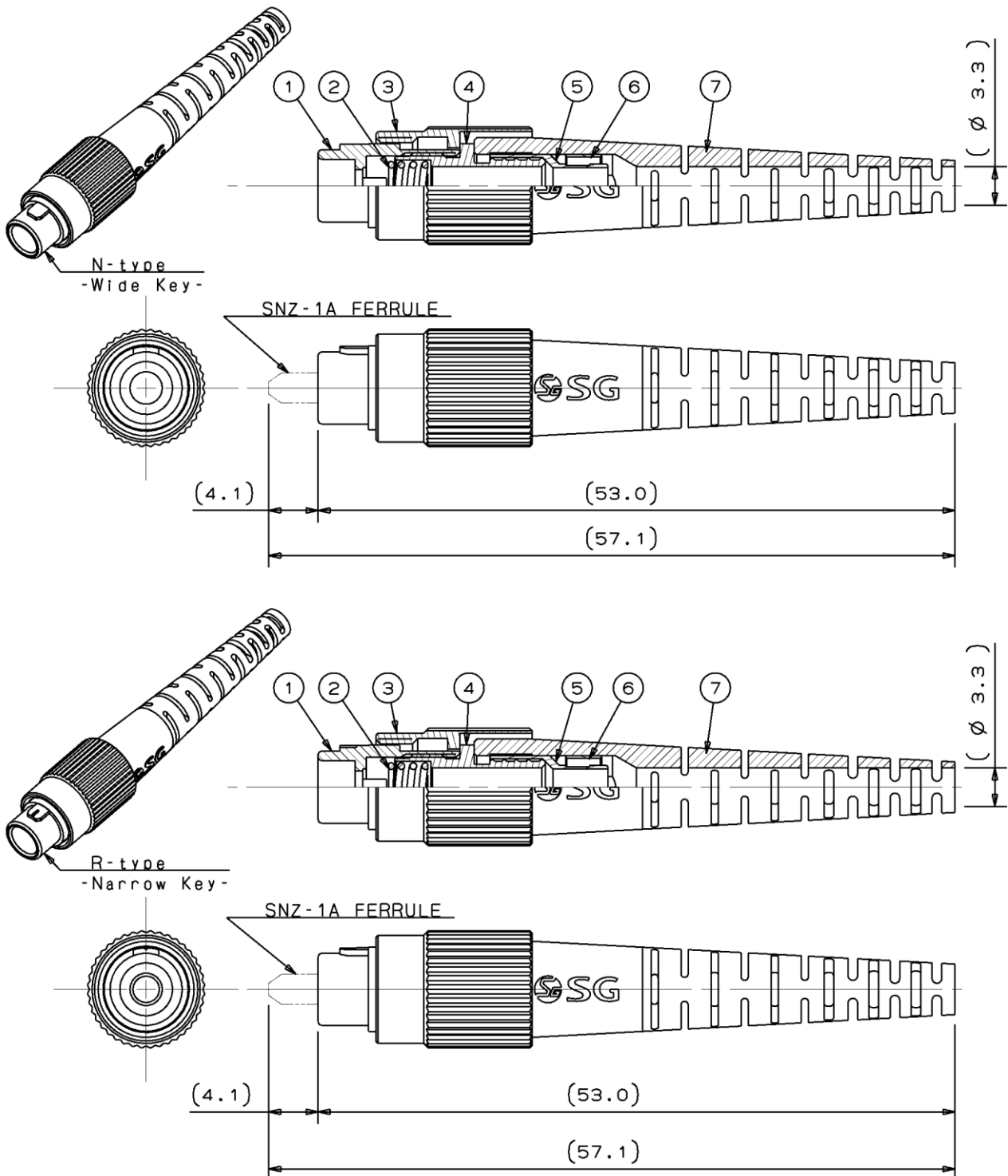


- Notes: 1 This drawing shows the tentatively assembled condition including a ferrule.  
On practical shipment of SAP-3 housing, this tentative assembly is not available.  
2 This drawing does not include the cap.  
3 The ferrule is not included in SAP-3 housing.

Unit: mm

Figure 1 SAP-3 Series Housing (for PC application,  $\varnothing$  3 mm cord)

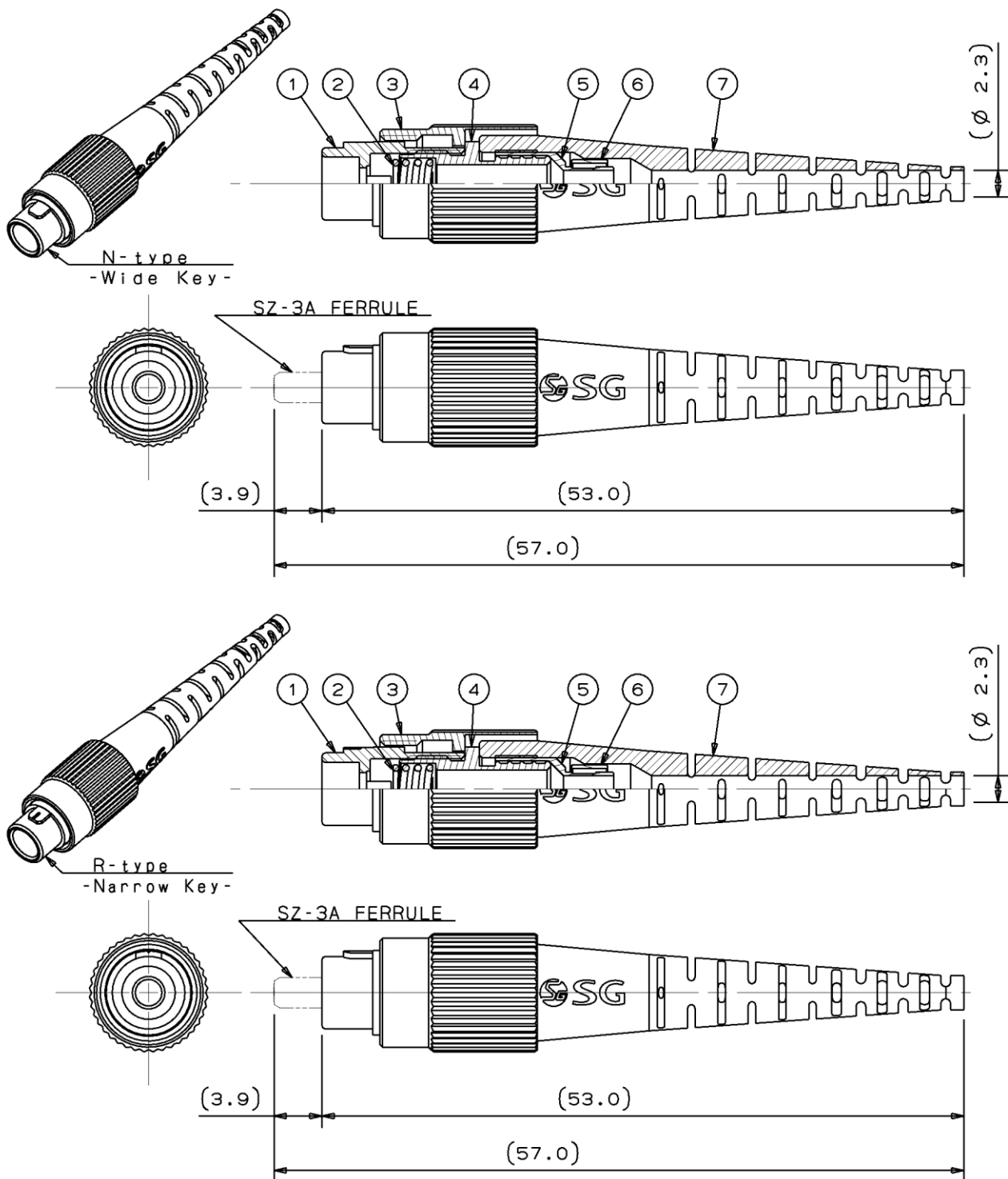




- Notes: 1 This drawing shows the tentatively assembled condition including a ferrule. On practical shipment of SAP-3 housing, this tentative assembly is not available.  
2 This drawing does not include the cap.  
3 The ferrule is not included in SAP-3 housing.

Unit: mm

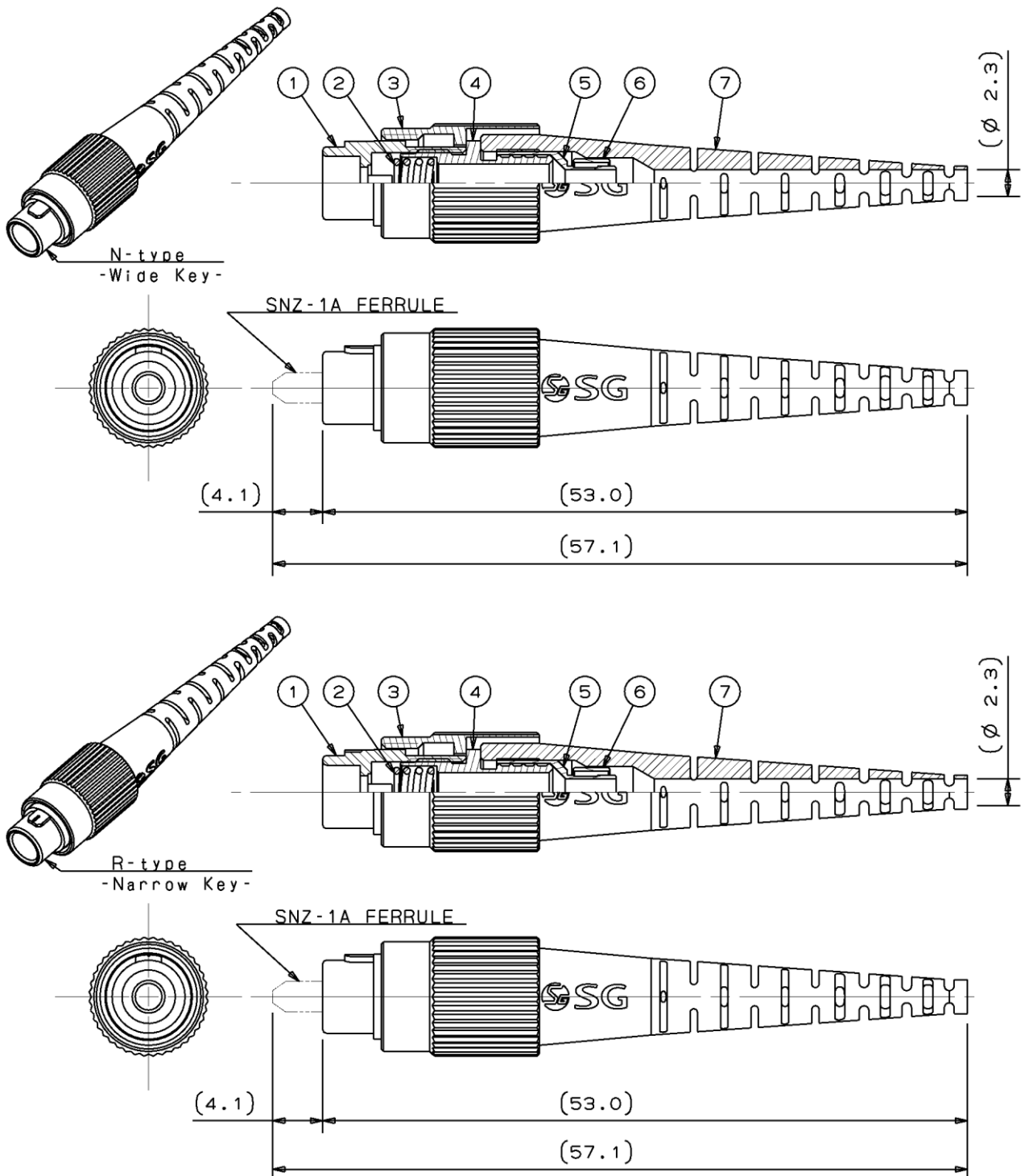
Figure 2 SAP-3 Series Housing (for APC application, ø 3 mm cord)



- Notes: 1 This drawing shows the tentatively assembled condition including a ferrule. On practical shipment of SAP-3 housing, this tentative assembly is not available.  
2 This drawing does not include the cap.  
3 The ferrule is not included in SAP-3 housing.

Unit: mm

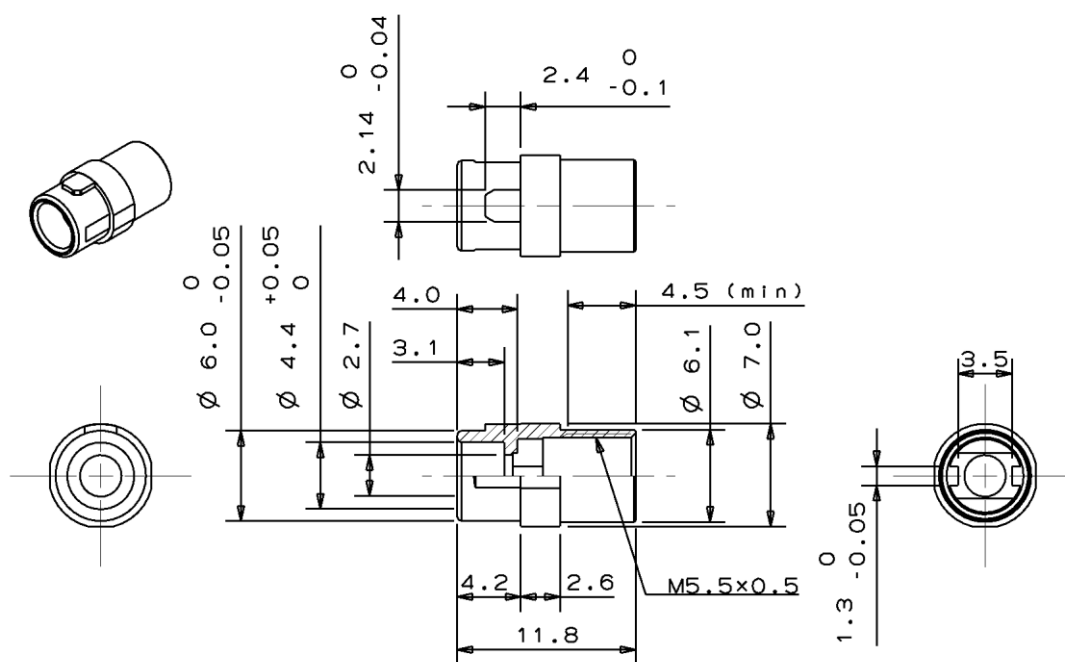
Figure 3 SAP-3 Series Housing (for PC application, ∅ 2 mm cord)



- Notes: 1 This drawing shows the tentatively assembled condition including a ferrule. On practical shipment of SAP-3 housing, this tentative assembly is not available.  
2 This drawing does not include the cap.  
3 The ferrule is not included in SAP-3 housing.

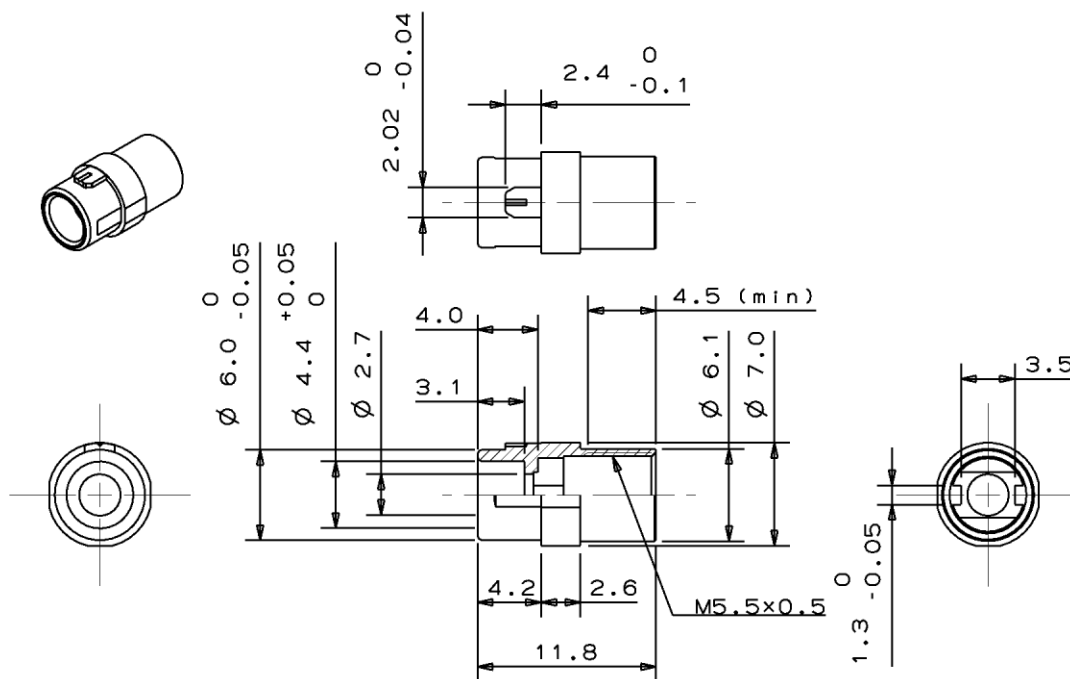
Unit: mm

Figure 4 SAP-3 Series Housing (for APC application, ∅ 2 mm cord)



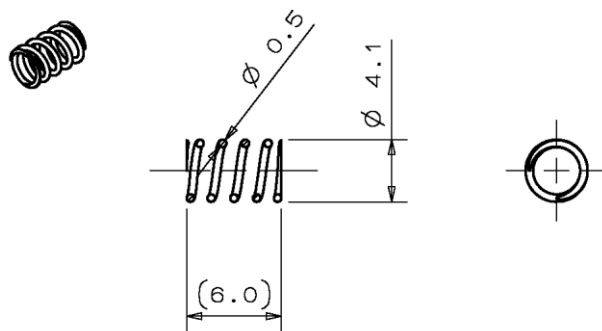
Unit: mm

Figure 5 ①-1 Frame (N-type - Wide Key -)



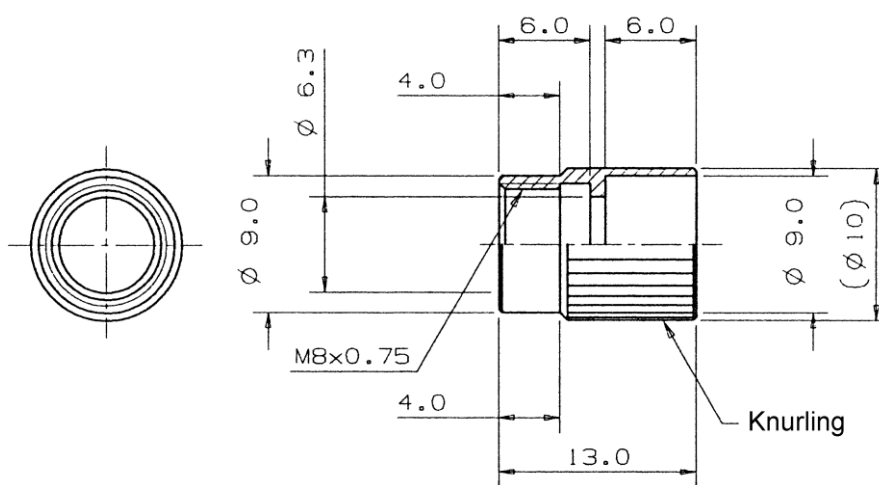
Unit: mm

Figure 6 ①-2 Frame (R-type - Narrow Key -)



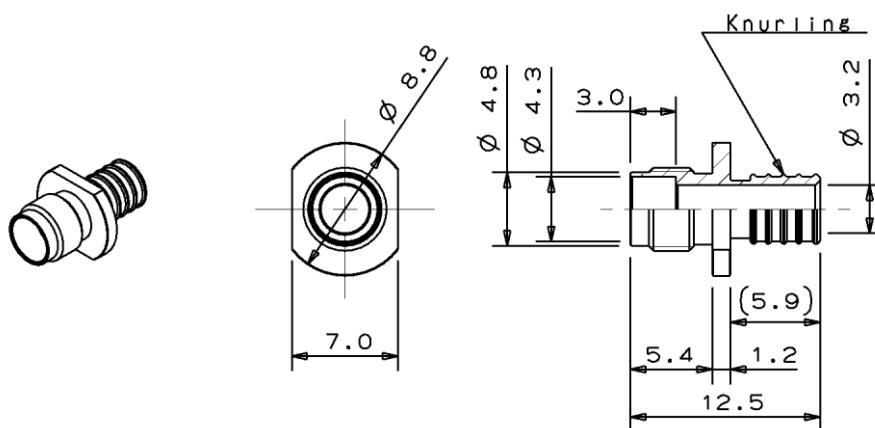
Unit: mm

Figure 7 ② Spring



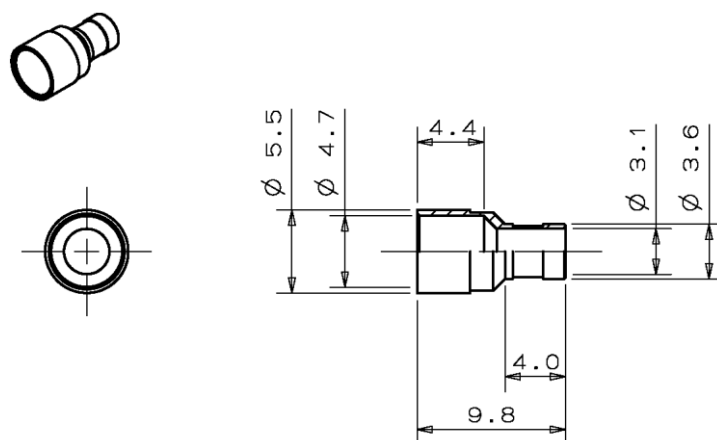
Unit: mm

Figure 8 ③ Coupling Nut



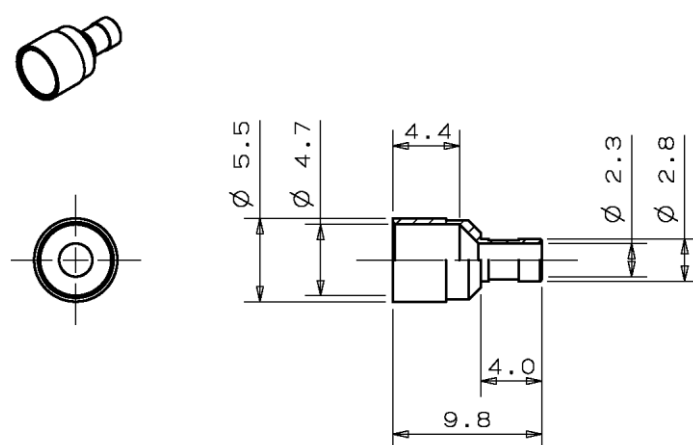
Unit: mm

Figure 9 ④ Stopper



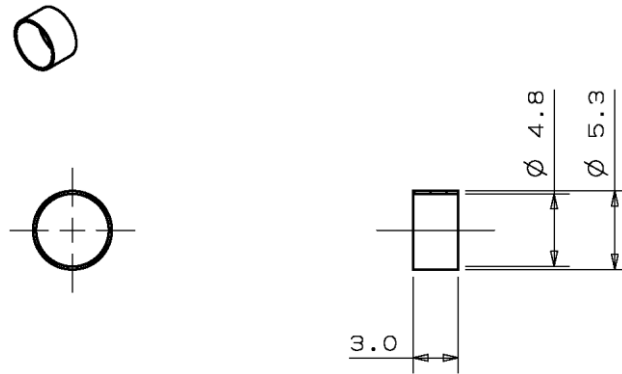
Unit: mm

Figure 10 ⑤-1 Crimping Ring (for  $\varnothing 3$  mm cord)



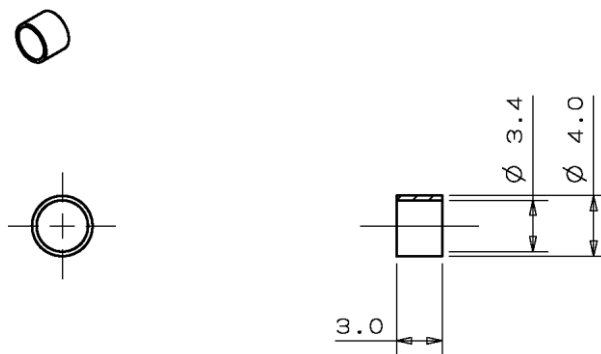
Unit: mm

Figure 11 ⑤-2 Crimping Ring (for  $\varnothing 2$  mm cord)



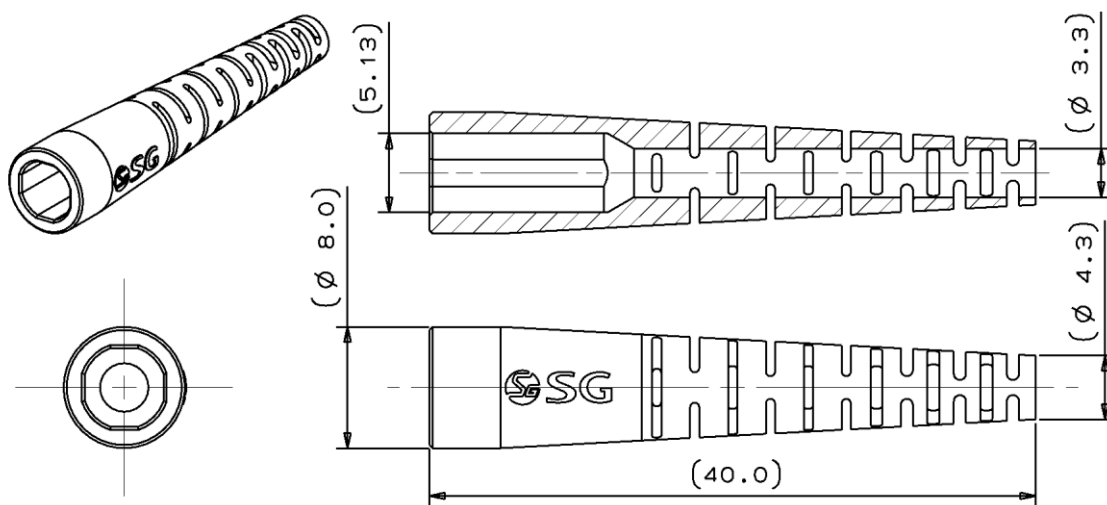
Unit: mm

Figure 12 ◎-1 Ring (for  $\varnothing$  3 mm cord)



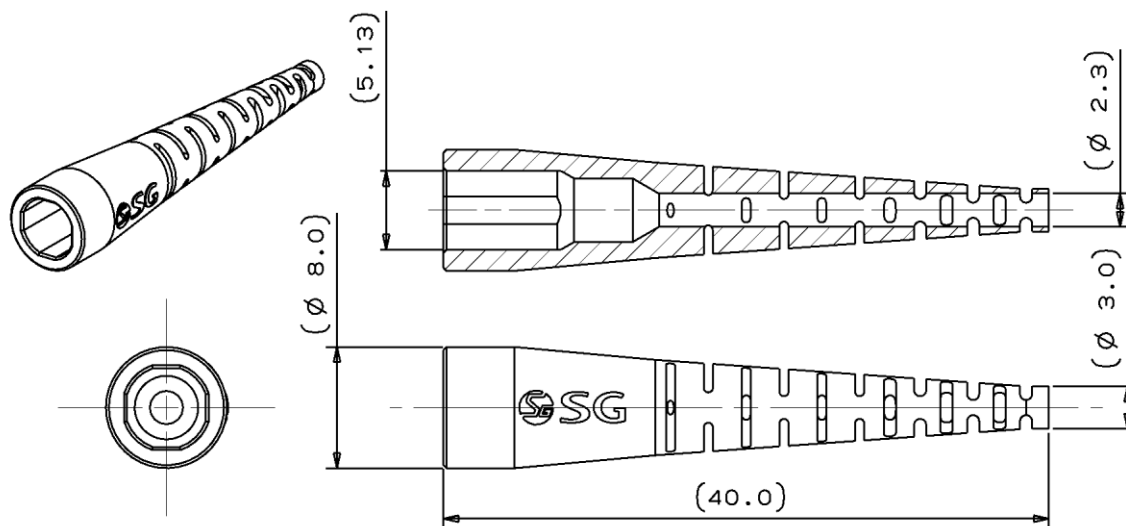
Unit: mm

Figure 13 ◎-2 Ring (for  $\varnothing$  2 mm cord)



Unit: mm

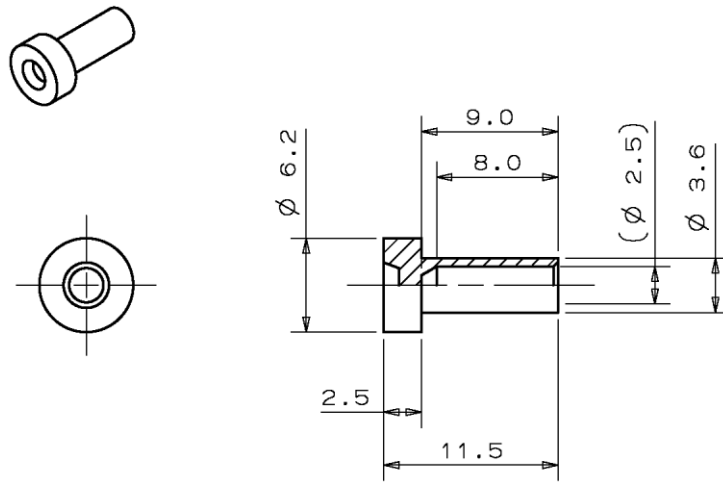
Figure 14 ⑦-1 Boot (for ø 3 mm cord)



Unit: mm

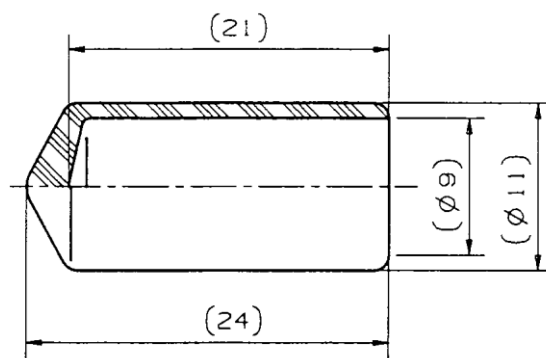
Figure 15 ⑦-2 Boot (for ø 2 mm cord)





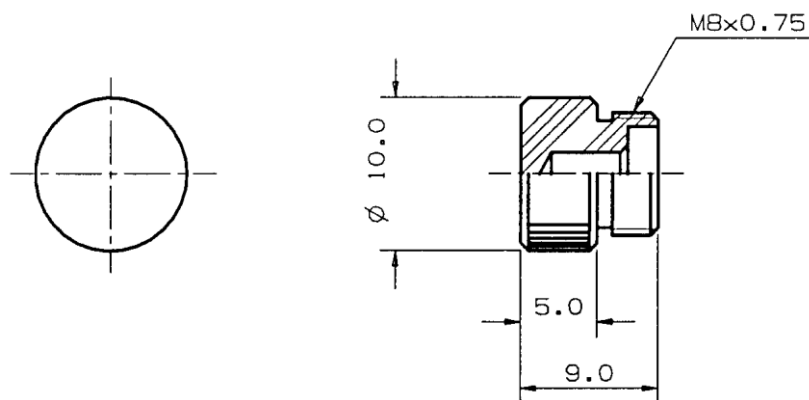
Unit: mm

Figure 16 ㊸-1 Cap (Plastic Cap)



Unit: mm

Figure 17 ㊸-2 Cap (PVC Cap)



Unit: mm

Figure 18 ㊸-3 Cap (Plastic Cap)