

SAP-8 Series
Single mode
FC CONNECTOR PLUG
TECHNICAL SPECIFICATIONS



SEIKOH GIKEN Co.,Ltd.
Fiber Optic Products Division
296-1, MATSUHIDAI, MATSUDO-SHI,
CHIBA, 270-2214 JAPAN.
TEL: +81-47-388-6111 FAX: +81-47-388-4477

SAP-8 Series Single mode FC CONNECTOR PLUG
TECHNICAL SPECIFICATIONS

NCD-4oB8-01	October	1994
NCD-4oB8-02	January	1995
NCD-4oB8-03	January	1996
NCD-4oB8-04	June	1997
NCD-4oB8-05	May	1998
NCD-4oB8-06	April	2000
S05-H051-01E	July	2006
S05-H051-02E	February	2009

Copyright © 1994 - 2009 by **SEIKOH GIKEN Co.,Ltd.**
All right reserved.

The information contained herein shall not be reproduced or disclosed to any third party without the express written consent of SEIKOH GIKEN Co., Ltd.
The Specifications contained herein are subject to change without notice.

Please address any questions, comments, and suggestions to:

SEIKOH GIKEN USA, Inc.

Headquarters

4405 International Blvd., Suite B109
Norcross, GA 30093 U.S.A.
TEL: +1-770-279-6602 FAX: +1-770-279-8839

Western Field Office

21250 Hawthorne Boulevard, Suite 700
Torrance, CA 90503
TEL: +1-310-792-7450 FAX: +1-310-792-7451

SEIKOH GIKEN Europe GmbH

Siemensstrasse 9
D-63263 Neu-Isenburg, Germany
TEL: +49-6102-297-701
FAX: +49-6102-297-750

SEIKOH GIKEN Hong Kong Co.,Ltd.

Concordia Plaza 21/F Rm2111,
1 Science Museum Road, Tsim Sha Tsui East,
Kowloon, Hong Kong.
TEL: +852-26206551 FAX: +852-26206525

TABLE OF CONTENTS

Section		Page
1	SCOPE	1
2	PART NUMBER	1
3	GENERAL SPECIFICATIONS	2
	3.1 Parts and Materials	2
	3.2 Physical Dimensions	3
	3.3 General Tolerance	3
	3.4 Appearance	4
4	PACKING	4
5	IDENTIFICATION	4
6	HANDLING AND CARE	4
	6.1 Conditions of Storage	4
	6.2 Precautions of Use	4
	6.3 Disposal	4

Table

Table 1	Part Number	1
Table 2	Parts and Materials	2
Table 3	Parts and Materials of Main Body	3
Table 4	Physical Specifications	3
Table 5	General Tolerance	3

Figure

Figure 1	SAP-8 Series Connector Plug (Machining Frame Type)	5
Figure 2	SAP-8 Series Connector Plug (Molding Frame Type)	6
Figure 3	Main Body (Machining Frame Type)	7
Figure 4	Main Body (Molding Frame Type)	8
Figure 5 to 14	Dimensions of Parts	9 to 13

1. SCOPE

These specifications apply to the SAP-8 series single mode FC connector plug supplied by SEIKOH GIKEN Co., Ltd.

2. PART NUMBER

Part number of the housing is shown in Table 1.


Table 1 Part Number

MODEL Number		TYPE Number										
SAP-8		3	3	1	2	5	1	A	3	0	0	G

Boot Color	
0	No Boot
1	Black
2	Red
3	White
5	Blue
7	Yellow

Boot I.D. [mm]	
0	No Boot
1	for \varnothing 0.9 buffered fiber (Rubber)
3	for \varnothing 3 cord (Plastic)
6	for \varnothing 2 cord (Plastic)
9	for \varnothing 0.9 buffered fiber (Plastic)

Ferrule I.D. [μ m]	
1 2 5	\varnothing 125
1 2 6	\varnothing 126

Marking of Boot		
		Applicable Boot I.D. [mm]
0	No Marking	No Boot for \varnothing 0.9 buffered fiber (Rubber)
1		for \varnothing 0.9 buffered fiber (Plastic) for \varnothing 2 to 3 cord (Plastic)

Auxiliary digit	
0	G

Specification	
0	Machined frame
D	Molded frame (Key integrated)

Package	
3	Key-ring un-installed on frame, Bulk Package
7	Key-ring installed on frame, Bulk Package

Cap	
0	No Cap
1	Black PVC Cap
3	White Plastic Cap
A	Black Ferrule Cap

3 GENERAL SPECIFICATIONS

3.1 Parts and Materials

Parts and materials are shown in Table 2, 3.

Table 2 Parts and Materials

Item	Part Name	Qty	Material	Notes
①-1	Main Body	1	See Table 3	Machining Frame Type See Table 3
①-2			See Table 3	Molding Frame Type See Table 3
②	Key-ring ^{Note 2}	1	Beryllium Copper	for Machining Frame Type
③-1	Crimping Ring ^{Note 3}	1	Aluminum Alloy	for ø 3 mm cord
③-2				for ø 2 mm cord
④-1	Boot	1	TPEE	for ø 3 mm cord Flammability UL94 V-0
④-2				for ø 2 mm cord Flammability UL94 V-0
④-3				for ø 0.9 mm buffered fiber Flammability UL94 V-0
④-4			Silicone	for ø 0.9 mm buffered fiber, Rubber Boot Flammability UL94 V-0
⑤-1	Cap	1	PP	Ferrule Cap, Black
⑤-2			PVC	PVC Cap, Black
⑤-3			PE	Plastic Cap, White

Notes: 1 Item on Table 2 corresponds to the item reference number on Figure 1 to 14.

2 ② Key-ring is not included for molding frame type.

3 ③ Crimping Ring is not included for ø 0.9 mm buffered fiber type.

Table 3 Parts and Materials of Main Body

Item	Part Name	Qty	Material	Notes
⑥	Capillary	1	Zirconia	-
⑦	Flange	1	Brass	Nickel Plating
⑧-1	Frame	1	Stainless Steel	Machining Frame
⑧-2			Zinc Die-casting	Molding Frame, Nickel Plating
⑨	Washer ^{Note 2}	1	Phosphor Bronze	for Machining Frame Type Nickel Plating
⑩	Spring	1	Stainless Steel	-
⑪	Coupling Nut	1	Brass	Nickel Plating
⑫-1	Stopper	1	Brass	for Machining Frame Type Nickel Plating
⑫-2				for Molding Frame Type Nickel Plating

Notes: 1 Item on Table 3 corresponds to the item reference number on Figure 3 to 4.

2 ⑨ Washer is not included for molding frame type.

3.2 Physical Dimensions

Figure 1 to 2 show the SAP-8 series connector plugs.

Figure 3 to 4 show the Main Body.

Figure 5 to 14 show the dimensions of the parts.

Table 4 shows the physical specifications of the SAP-8 series connector plug.

- In accordance with IEC 61754-13 Type FC-PC connector family.
- In accordance with JIS C 5970 F01 Type connectors.

Table 4 Physical Specifications

Items	Parts Number	Specifications	Remarks
Diameter (ø d)	SAP-8 **125****0G	ø 0.125 mm	-
	SAP-8 **126****0G	ø 0.126 mm	-

3.3 General Tolerances

Permissible deviation in dimensions without tolerance indication is in accordance with ISO 2768-m (JIS B 0405-m), as shown in Table 5.

Table 5 General Tolerance (ISO 2768-m)

Basic size step [mm]		Permissible deviation [mm]
Over	Under	

0.5	3	± 0.1
3	6	± 0.1
6	30	± 0.2
30	120	± 0.3

3.4 Appearance

There should be no burr, peeling of plating or scratches that affect the product.

4 PACKING

The product is packed to prevent damage during shipment.

5 IDENTIFICATION

Identification label should indicate the part number and the lot number of the product(s) and should be permanently attached to the packing bag.

6 HANDLING AND CARE

6.1 Conditions of Storage

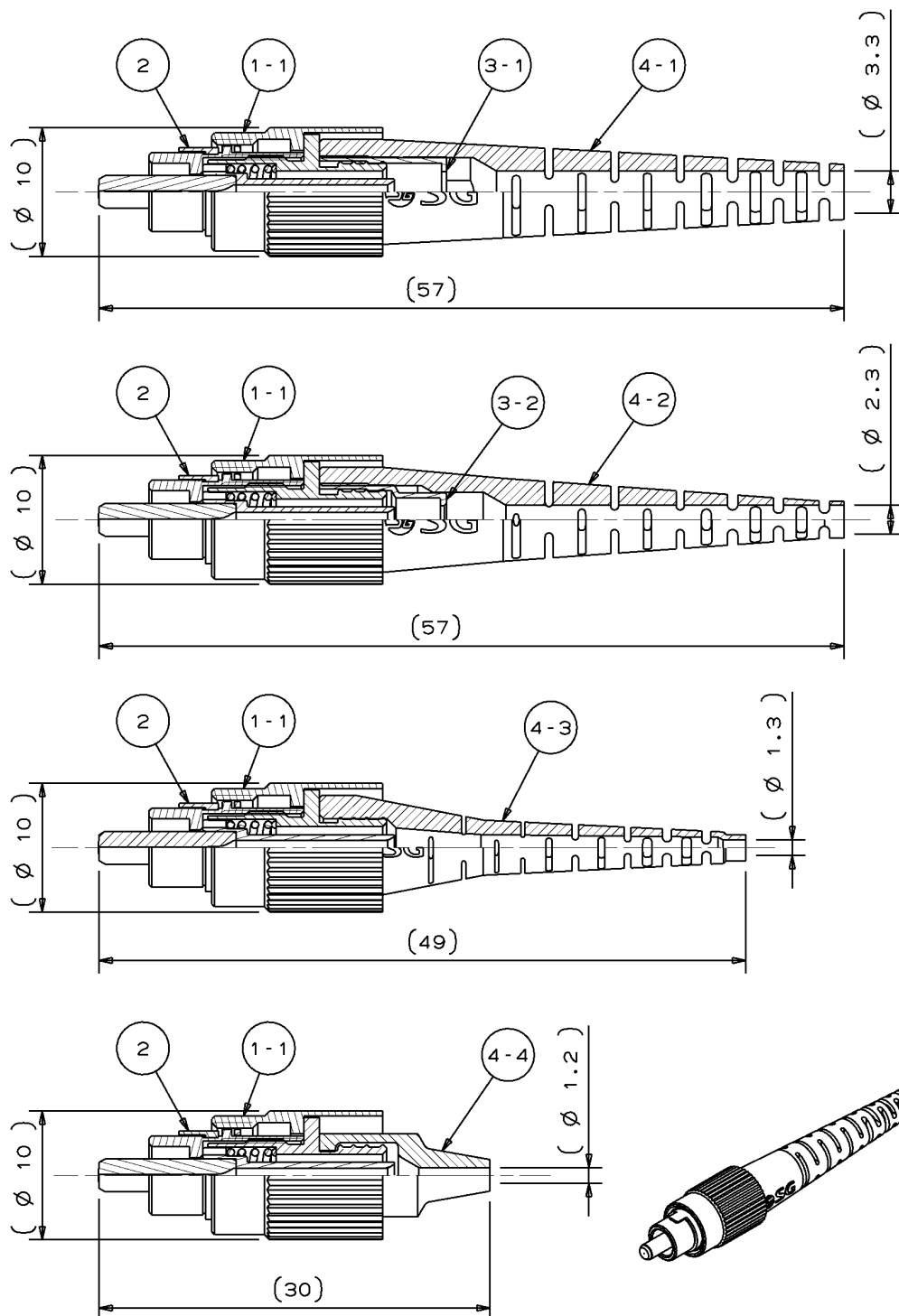
For storage of the product, keep in the packing bag and keep away from corrosive gas, high-temperature and humidity, extreme-low temperature and direct sunlight.

6.2 Precautions for Use

Contamination, oil, sweat and others debris on the ferrule end face may influence the performance of the product. If contamination is on the ferrule end face, wipe the end face with the end face cleaner.

6.3 Disposal

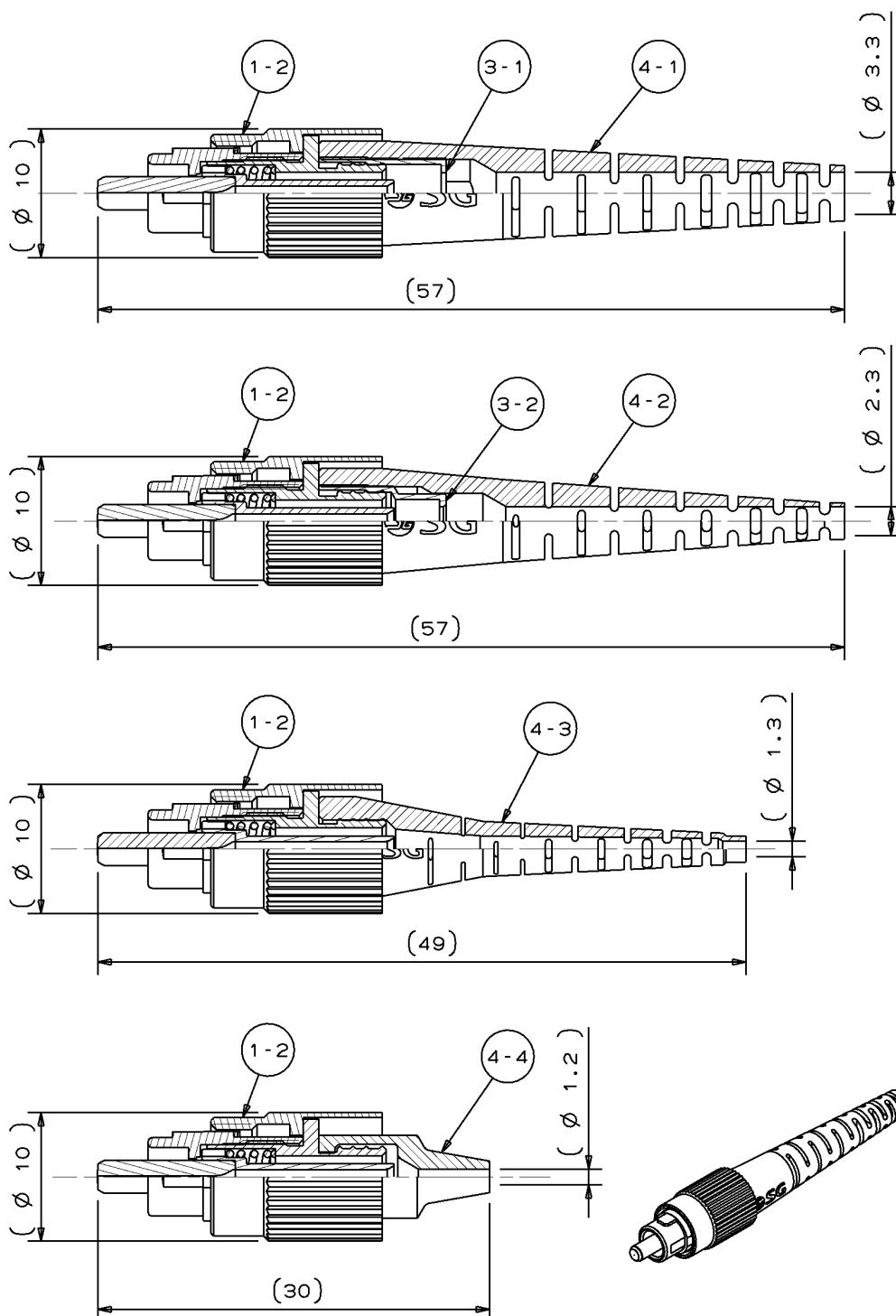
When discarding this product, please follow the regulations of your own country.



- Notes 1 This drawing shows the tentatively assembled condition.
On practical shipment of SAP-8 connector plug, this tentative assembly is not available.
- 2 This drawing does not include the cap.

Unit: mm

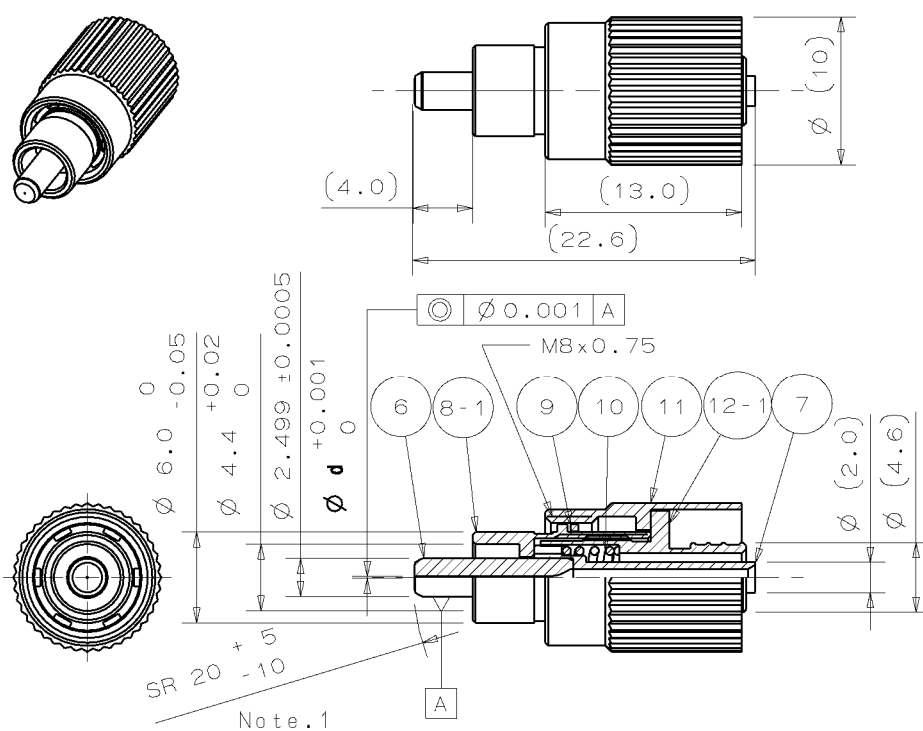
Figure 1 SAP-8 Series Connector Plug (Machining Frame Type)



- Notes 1 This drawing shows the tentatively assembled condition.
On practical shipment of SAP-8 connector plug, this tentative assembly is not available.
- 2 This drawing does not include the cap.

Unit: mm

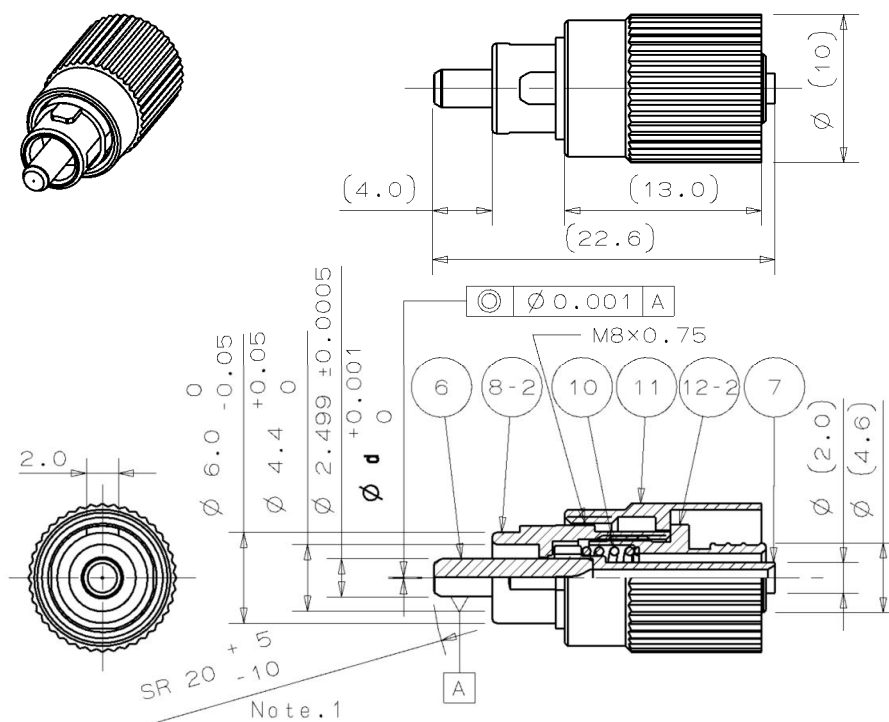
Figure 2 SAP-8 Series Connector Plug (Molding Frame Type)



- Notes 1 End curve offset: 0.05 or less
2 Diameter ($\varnothing d$) differs according to the part number shown in Table 4.

Unit: mm

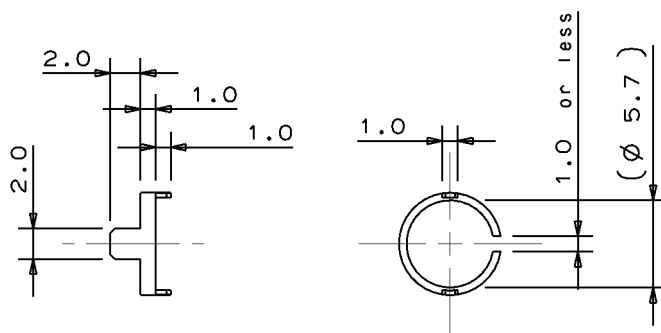
Figure 3 ①-1 Main Body (Machining Frame Type)



- Notes 1 End curve offset: 0.05 or less
2 Diameter ($\varnothing d$) differs according to the part number shown in Table 4.

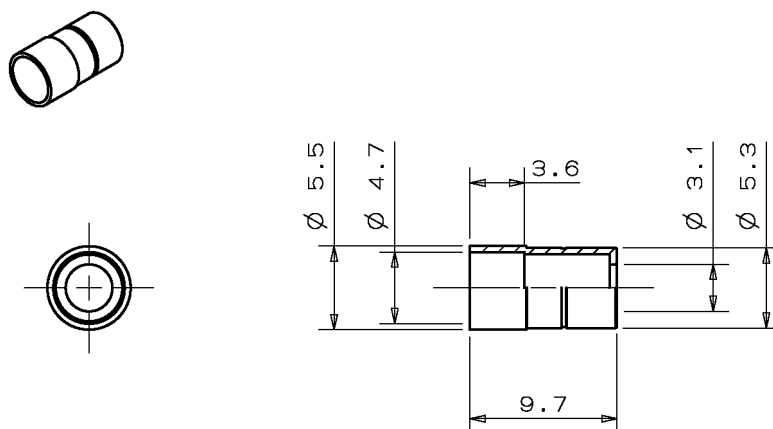
Unit: mm

Figure 4 ①-2 Main Body (Molding Frame Type)



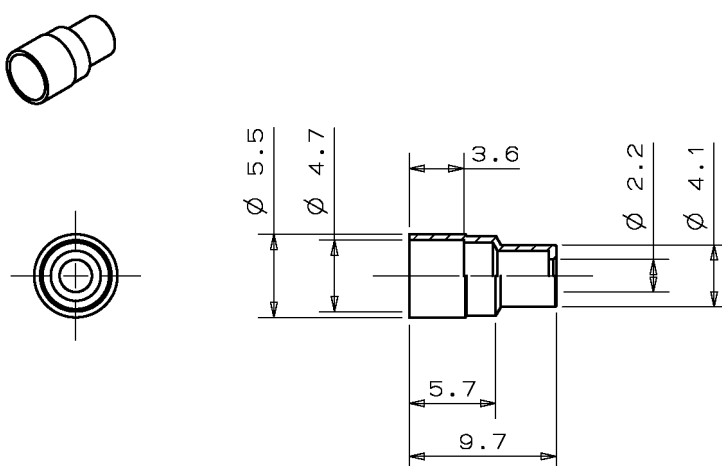
Unit: mm

Figure 5 ② Key-ring (for Machining Frame Type)



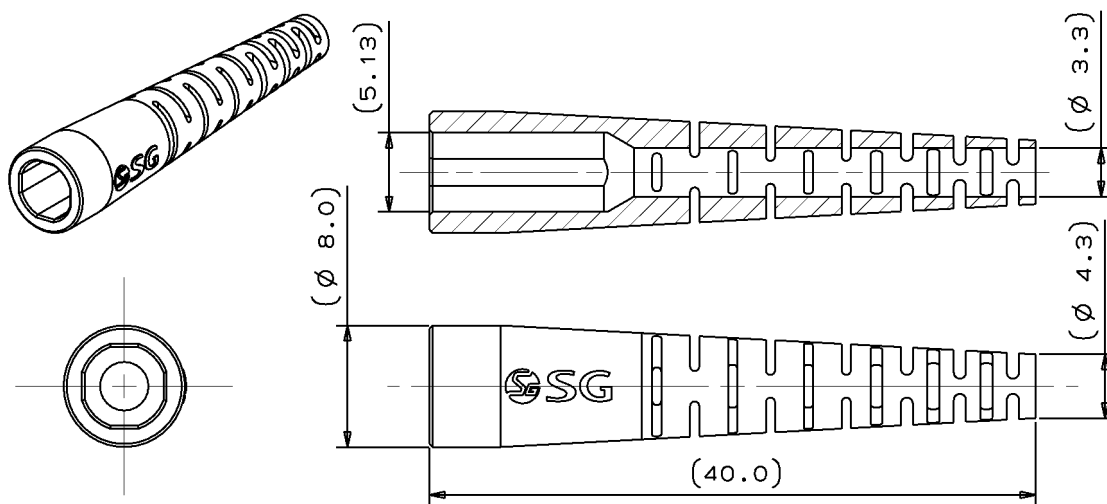
Unit: mm

Figure 6 ③-1 Crimping Ring (for \varnothing 3 mm cord)



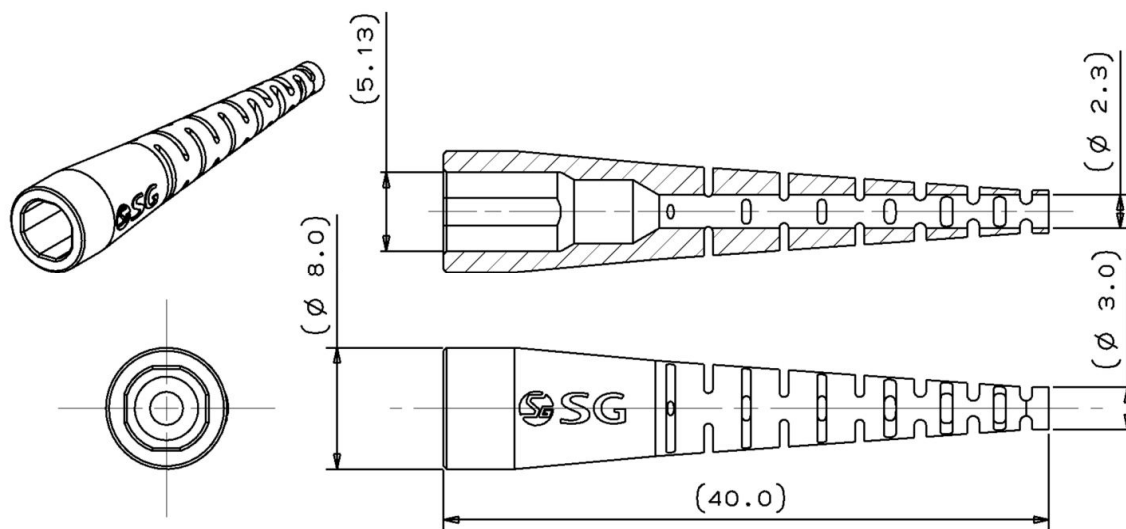
Unit: mm

Figure 7 ③-2 Crimping Ring (for \varnothing 2 mm cord)



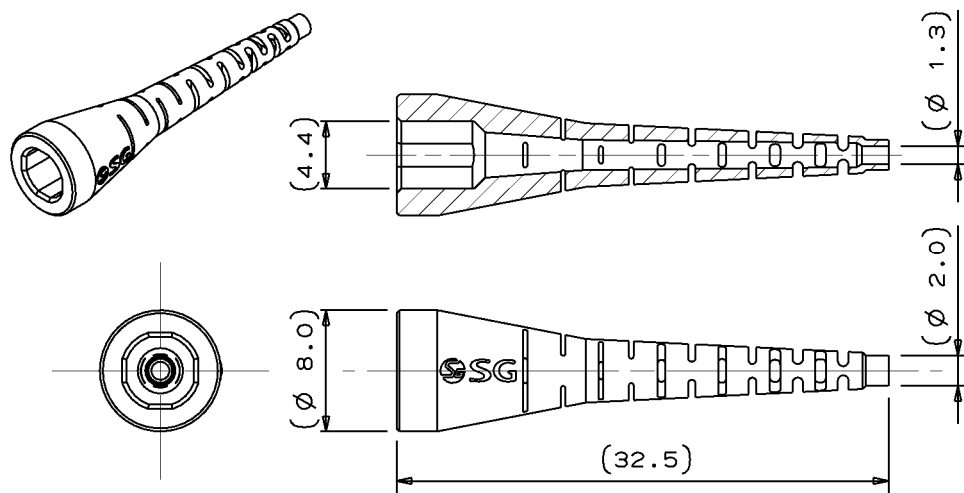
Unit: mm

Figure 8 ④-1 Boot (for ∅ 3 mm cord)



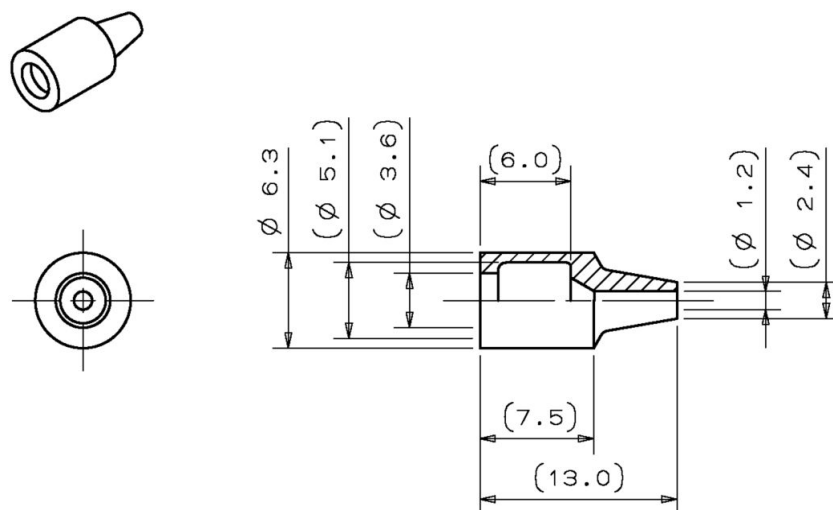
Unit: mm

Figure 9 ④-2 Boot (for ∅ 2 mm cord)



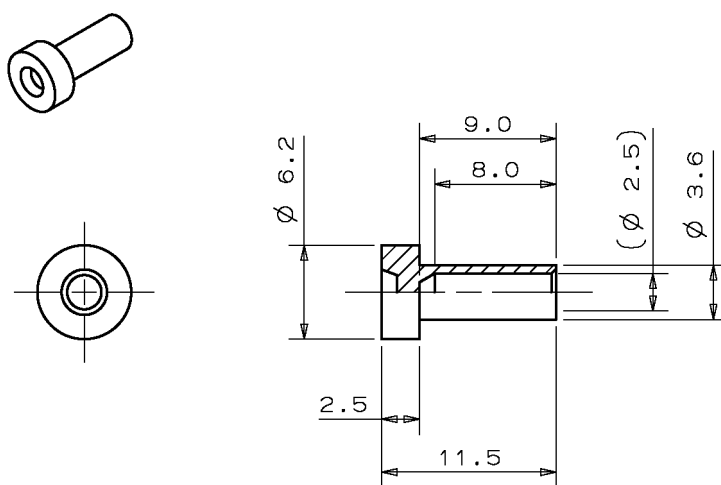
Unit: mm

Figure 10 ④-3 Boot (for \varnothing 0.9 mm buffered fiber)



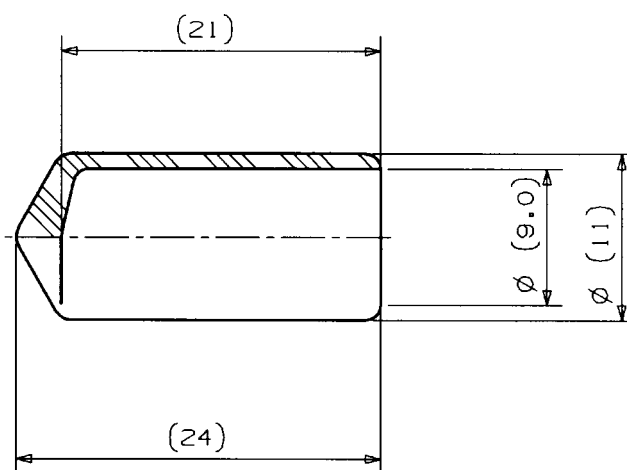
Unit: mm

Figure 11 ④-4 Boot (for \varnothing 0.9 mm buffered fiber, Rubber Boot)



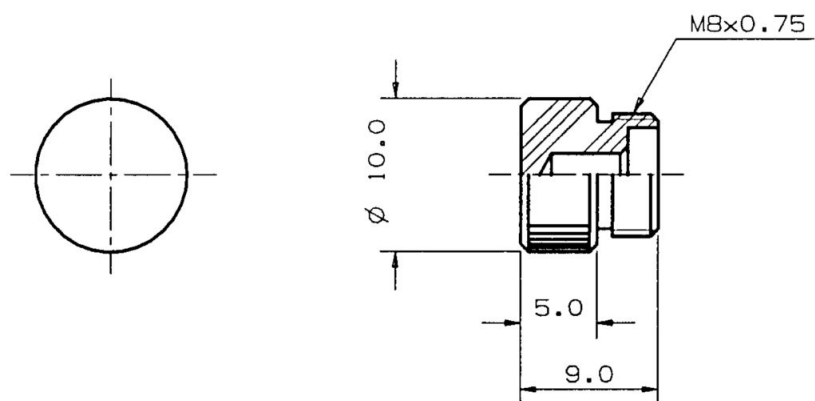
Unit: mm

Figure 12 ㊟-1 Cap (Ferrule Cap)



Unit: mm

Figure 13 ㊟-2 Cap (PVC Cap)



Unit: mm

Figure 14 ⑤-3 Cap (Plastic Cap)