

**SLC-P2 Series**  
**Single mode**  
**LC CONNECTOR PLUG**  
- for ø 2 mm cord -

**TECHNICAL SPECIFICATIONS**



**SEIKOH GIKEN**

**SEIKOH GIKEN Co.,Ltd.**  
**Fiber Optic Products Division**  
296-1, MATSUHIDAI, MATSUDO-SHI,  
CHIBA, 270-2214 JAPAN.  
TEL: +81-47-388-6111 FAX: +81-47-388-4477

**SLC-P2 Series LC CONNECTOR PLUG - for ø 2 mm cord -**  
**TECHNICAL SPECIFICATIONS**

ACD-25B4-01	June	2002
ACD-25B4-02	March	2003
ACD-25B4-03	May	2005
ACD-25B4-04	June	2005
S05-H039-01J	July	2006

Copyright © 2002 - 2006 by **SEIKOH GIKEN Co.,Ltd.**  
All right reserved.

The information contained herein shall not be reproduced or disclosed to any third party without the express written consent of SEIKOH GIKEN Co., Ltd.  
The specifications contained herein are subject to change without notice.

Please address any questions, comments, and suggestions to:

**SEIKOH GIKEN USA, Inc.**  
**Headquarters**

4405 International Blvd., Suite B109  
Norcross, GA 30093 U.S.A.  
TEL: +1-770-279-6602 FAX: +1-770-279-8839

**Northeastern Field Office**

714 Executive Drive  
Princeton, NJ 08540  
TEL: +1-609-279-0225 FAX: +1-609-279-0207

**Western Field Office**

21250 Hawthorne Boulevard, Suite 700  
Torrance, CA 90503  
TEL: +1-310-792-7450 FAX: +1-310-792-7451

**SEIKOH GIKEN Europe GmbH**  
**Frankfurt Branch**

Siemensstrasse 9  
D-63263 Neu-Isenburg, Germany  
TEL: +49-6102-297-701  
FAX: +49-6102-297-750

**SEIKOH GIKEN Hong Kong Co.,Ltd.**

Concordia Plaza 21/F Rm2111,  
1 Science Museum Road, Tsim Sha Tsui East,  
Kowloon, Hong Kong.  
TEL: +852-26206551 FAX: +852-26206525

## TABLE OF CONTENTS

Section	Page
1 SCOPE	1
2 PART NUMBER	1
3 GENERAL SPECIFICATIONS	2
3.1 Parts and Materials	2
3.2 Physical Dimensions	2
3.3 General Tolerance	3
3.4 Appearance	3
4 PACKING	3
5 IDENTIFICATION	3
6 HANDLING AND CARE	3
6.1 Conditions of Storage	3
6.2 Precautions of Use	3
6.3 Disposal	3

### Table

Table 1	Part Number	1
Table 2	Parts and Materials	2
Table 3	Parts and Materials of Main Body	2
Table 4	Physical Specifications	2
Table 5	General Tolerance	3

### Figure

Figure 1	SLC-P2 Series Connector Plug	4
Figure 2	Main Body	5
Figure 3 to 5	Dimensions of Parts	6 to 7



# 1 SCOPE

These specifications apply to the SLC-P2 series LC connector plug - for ø 2 mm cord - supplied by SEIKOH GIKEN Co., Ltd.

2 PART NUMBER

Part number of the connector plug is shown in Table 1.

Table 1 Part Number

MODEL Number		TYPE Number										
SLC-P2		3	2	1	2	5	1	C	3	0	2	G

Boot Color	
0	No Boot
2	Red
3	Light Gray
5	Blue
7	Yellow
8	Green


Boot I.D. [mm]	
0	No Boot
2	for ø 1.6 to 2 cord

Ferrule I.D. [μm]	
1 2 5	ø 125
1 2 F	ø 125.5
1 2 6	ø 126

Auxiliary digit	
0 2 G	

Package	
3	Bulk Package

Cap	
0	No Cap
C	White Frame Cap

Marking of Boot	
1	 SG

### 3 GENERAL SPECIFICATIONS

#### 3.1 Parts and Materials

Parts and materials are shown in Table 2 and 3.

**Table 2 Parts and Materials**

Item	Part Name	Qty	Material	Notes
①	Main Body	1	See Table 3	See Table 3
②	Crimping Ring	1	Aluminum Alloy + Sumitube®	Sumitube®: White, Flammability UL224 VW-1
③	Boot	1	TPEE	Flammability UL94 V-0
⑩	Cap	1	TPEE	Frame Cap White, Flammability UL94 V-0

Note: Item on Table 2 corresponds to the item reference number on Figure 1 to 5.

**Table 3 Parts and Materials of Main Body**

Item	Part Name	Qty	Material	Notes
④	Capillary	1	Zirconia	-
⑤	Flange	1	Brass	Nickel Plating
⑥	Tubing	1	PTFE	Clear, Flammability UL94 V-0
⑦	Plug Frame	1	PPSU	Blue, Flammability UL94 V-0
⑧	Spring	1	Stainless Steel	-
⑨	Stopper	1	PPSU + Brass	Blue, Flammability UL94 V-0 Brass: Nickel Plating

Note: Item on Table 3 corresponds to the item reference number on Figure 2.

#### 3.2 Physical Dimensions

Figure 1 shows the SLC-P2 series connector plug.

Figure 2 shows the main body.

Figure 3 to 5 show the dimensions of the parts.

Table 4 shows the physical specifications of the SLC-P2 series connector plug.

- In accordance with IEC 61754-20 Type LC connector family.

**Table 4 Physical Specifications**

Items	Parts Number	Specifications	Remarks
Diameter (ø d)	SLC-P2 **125**302G	ø 0.125 mm	-
	SLC-P2 **12F**302G	ø 0.1255 mm	-
	SLC-P2 **126**302G	ø 0.126 mm	-

### 3.3 General Tolerances

Permissible deviation in dimensions without tolerance indication is in accordance with ISO 2768-m (JIS B 0405-m), as shown in Table 3.

Table 3 General Tolerance (ISO 2768-m)

Basic size step [mm]		Permissible deviation [mm]
Over	Under	
0.5	3	±0.1
3	6	±0.1
6	30	±0.2
30	120	±0.3

### 3.4 Appearance

There should be no burr, peeling of plating or scratches that affect the product.

## 4 PACKING

The product is packed to prevent damage during shipment.

## 5 IDENTIFICATION

Identification label should indicate the part number and the lot number of the product(s) and should be permanently attached to the packing bag.

## 6 HANDLING AND CARE

### 6.1 Conditions of Storage

Keep the product, in the packing bag, at the following conditions for its storage.

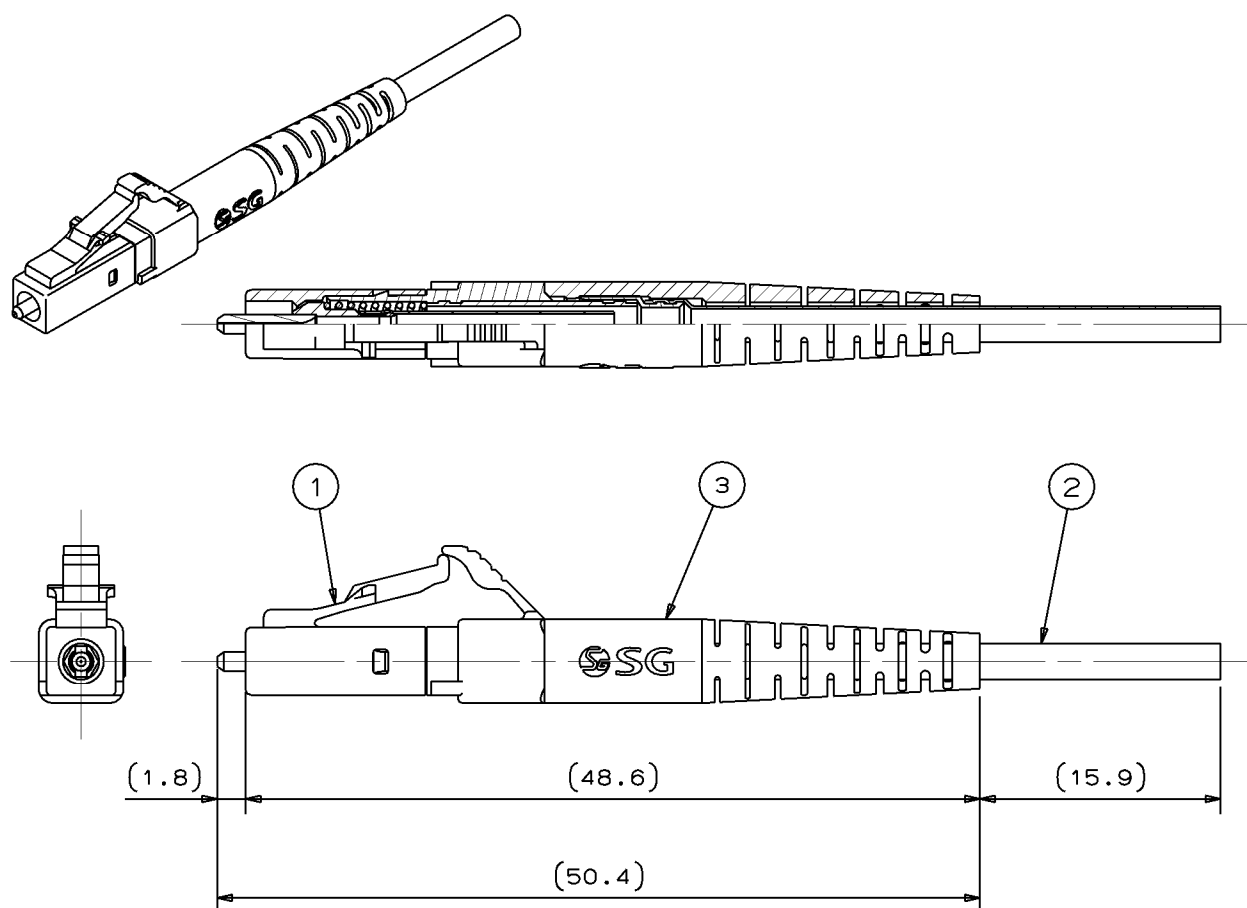
- Storage temperature: -40 to +85 degrees C
- Storage humidity: 0 to 85%RH, non-condensing

### 6.2 Precautions for Use

Contamination, oil, sweat and others debris on the ferrule end face may influence the performance of the product. If contamination is on the ferrule end face, wipe the end face with the end face cleaner.

### 6.3 Disposal

When discarding this product, please follow the regulations of your own country.



- Notes: 1 This drawing shows the tentatively assembled condition.  
On practical shipment of SLC-P2 connector plug, this tentative assembly is not available.
- 2 This drawing does not include the cap.

Unit: mm

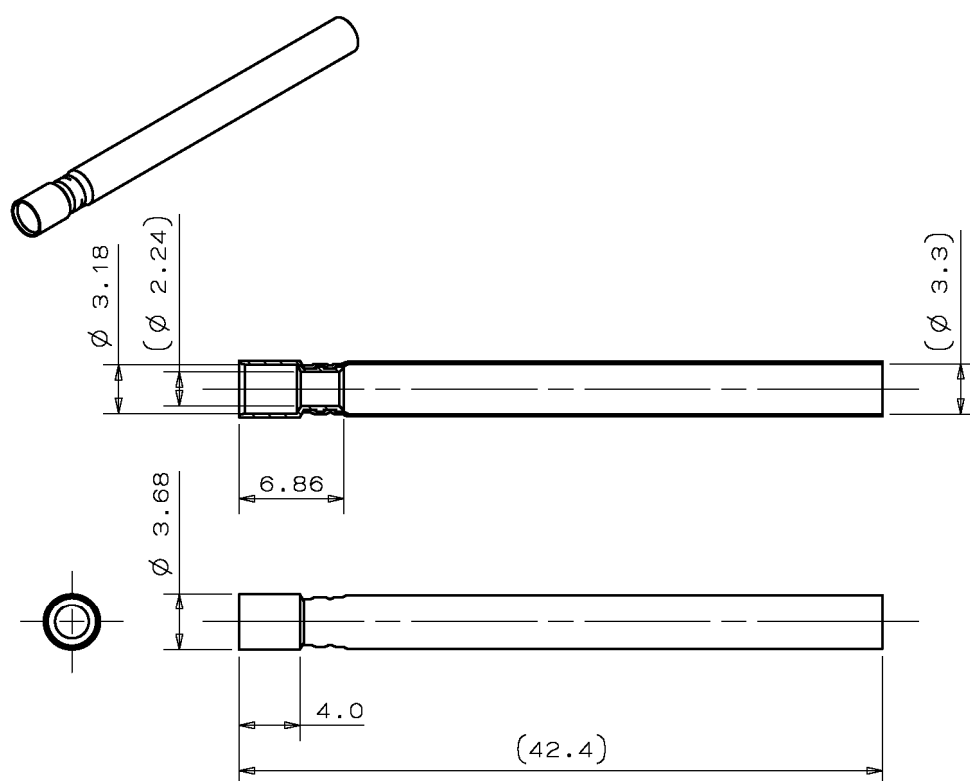
Figure 1 SLC-P2 Series Connector Plug



Unit: mm

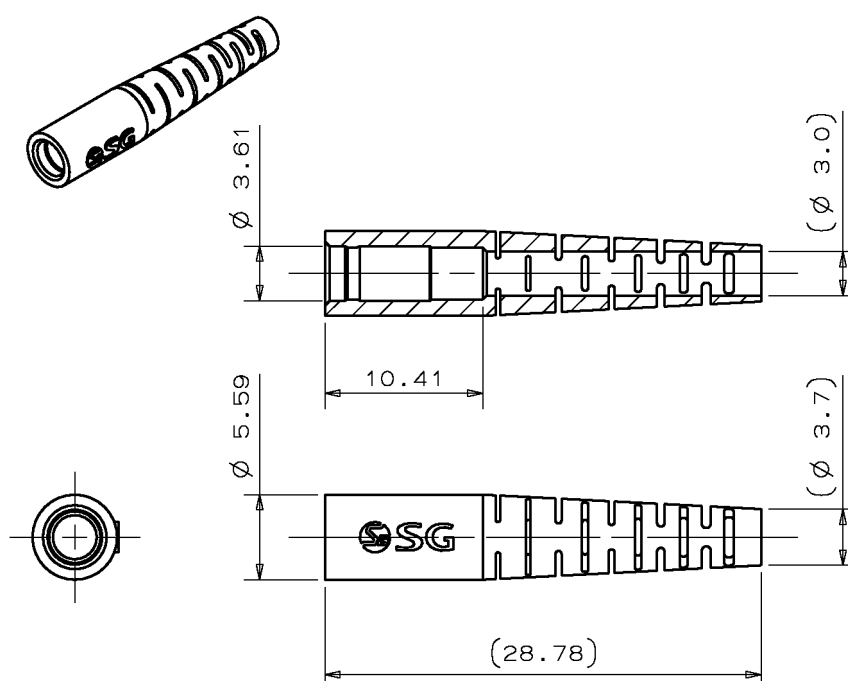


**SEIKOH GIKEN**



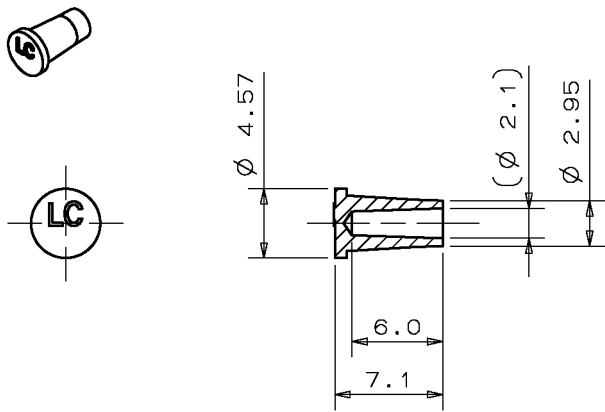
Unit: mm

Figure 3 ②Crimping Ring



Unit: mm

Figure 4 ③Boot



Unit: mm

Figure 5 ⑩Cap