

Fiber Auto Inspection System FAIS



Partnership with  HM SOLUTION CO.,LTD

FAIS (Fiber Auto Inspection System)

This is an automated inspection system that can perform the inspection by the polishing holders after polished passive elements such as ferrules, and optical connectors/cables. It's providing innovative efficiency for the manufacturers and their production of optical passive components/devices.

KEY FEATURES

- Providing 4 types of automation (Auto-Position, Auto-Center, Auto-Focus, Auto-Inspection)
- Fast and constant inspection by IEC standards
- End face inspection of connectors while mounted on polishing holder
- Rotator mount for MT ferrule polishing holder (Future development)
- Intuitive distinguish pass/fail result (Graphic indicator)
- Enables data management (Reporting, Statistics)
- Barcode scanning for automation (Action on Scan option) inspection
- Support central data collection

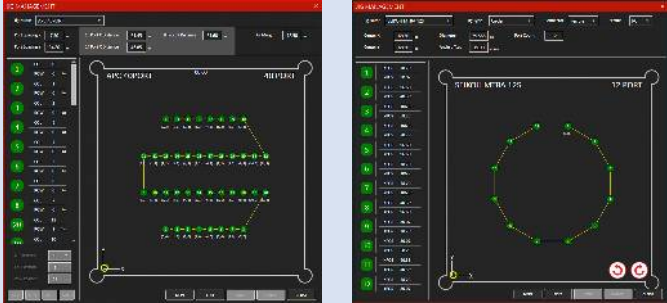
APPLICATIONS

- Pre-inspection after polished connectors at the manufacturer
- Final inspection of Passive components & assembly
- Detecting Scratch, Pit, Contamination on connector end face
- Management of polishing holders quality

FAIS data sheet

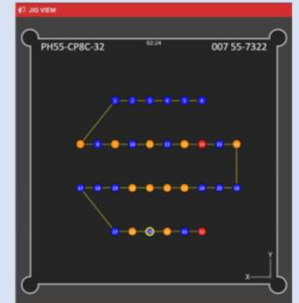
POLISHING HOLDER MANAGEMENT

- Support all types of polishing holders layout
- Store data with S/N of each polishing holder
- Easy import/export polishing holder profiles



PERFORMANCE

- Less than 6sec per port for Inspection (Positioning, Auto Focusing and Save a result)
- Inspection Profile according to IEC (Create/Edit/Delete)
- Allow Full inspection and Single inspection



■ GENERAL SPECIFICATIONS

PARAMETER	SPECIFICATION
Dimension (mm)	320 x 320 x 300
Weight (kg)	Approx. 15.00
Operational Temp (°C) / Hum (%)	-10 to 50 / 5% to 95%, relative, non-condensing
Storage Temp (°C) / Hum (%)	-15 to 65 / 5% to 95%, relative, non-condensing
Power Input	24VDC via AC/DC Adaptor, (AC Input: 100 to 240VAC)

■ TECHNICAL SPECIFICATIONS

PARAMETER	SPECIFICATION
Inspection Area (X, Y)	130mm x 130mm (depending on the type of mount)
Method of Focus	Liquid Lens
Max Focusable Distance	< 1.00 mm
Inspection Duration	Min. 3 minutes @ 40 ports (depending on the type of products)
FOV (Field of View)	Depending on Objectives
Min. Resolution	7.94um@X/Y Axis, 3.18um@Z Axis
Focusing Time	Typically, <2sec
Holder (Products) Profiles	Acceptable all types of polishing Holder

■ ORDERING INFORMATION

PART NO	DESCRIPTIONS
FAIS-01-00 ⁽¹⁾	Fiber Auto Inspection System with Inspection only Included Square shape mount, 24VDC AC/DC Adaptor, USB3.0 Cable, Installation USB memory stick

(1) Requires, External PC or Laptop for operation (Windows Based)

WORLDWIDE SUBSIDIARIES AND SALES OFFICES:

North America
Atlanta, Georgia
Tel: +1-770-279-6602
Fax: +1-770-279-8839
sales@sg-usa.com

Europe
Frankfurt, Germany
Tel: +49-6102-297-701
Fax: +49-6102-297-750
info@sg-euro.de

Asia
Matsudo, Japan
Tel: +81-47-388-6111
Fax: +81-47-388-4477
sales.div@seikoh-giken.co.jp

China
Hangzhou, PROC
Tel: +86-571-8777-4098
Fax: +86-571-8777-4099
sales@sg-h.cn

Seikoh Giken reserves the right to improve, enhance and modify features and specifications of Seikoh Giken products without prior notifications