

---

コントローラ

Controller

Ver.2.3

---

Jul.4,2012

Seikoh Giken Co., Ltd.

### 1.適用 Scope

本仕様書はコントローラに適用する。

This specification applies to Controller.

### 2.型名 Product code

Table 1

| Product code | Remarks                            |
|--------------|------------------------------------|
| C3-0355      | Frequency range : 0.1 to 3,000MHz  |
| C3-1055      | Frequency range : 0.1 to 10,000MHz |

### 3.付属品 Accessories

Table 2

| Item                  | Quantity | Remark                 |
|-----------------------|----------|------------------------|
| AC power cable        | 1        | For controller(L=2.5m) |
| Rack mounting bracket | 1        | —                      |

### 4.環境条件 Standard operating conditions

Table 3

| Item                        | Specification   |      |      |      | Remarks |
|-----------------------------|-----------------|------|------|------|---------|
|                             | Min.            | Typ. | Max. | Unit |         |
| Operating temperature range | 0               |      | 40   | °C   | —       |
| Operating humidity range    | 45              |      | 90   | %RH  | —       |
| Storage temperature range   | -20             |      | 60   | °C   | —       |
| SET-up location             | Indoor use only |      |      |      | —       |
| Warm up time                | Over 1hr        |      |      |      | —       |

Note : Refrain from dew condensation

## 5. 定格 Rating

Table 4

| Item                      | Specification          |      |      |        | Remark  |   |
|---------------------------|------------------------|------|------|--------|---|---|
|                           | Min.                   | Typ. | Max. | Unit   |   |   |
| ◆Part of light source     |                        |      |      |        |   |   |
| Output port               | 3 ports                |      |      |        |   |   |
| Port select               | Automatic              |      |      |        | GP-IB control   |   |
|                           | Manual                 |      |      |        | Panel switch  |   |
| Opt. alarm(Output level)  | Rating < -3dB          |      |      |        | Normal : Green(LED)<br>Abnormal : Red(LED)  |   |
| ◆Part of O/E              |                        |      |      |        |   |   |
| Frequency range           | C3-0355                | 0.1  |      | 3,000  | MHz   | — |
|                           | C3-1055                | 0.1  |      | 10,000 |   |   |
| Output impedance          | 50                     |      |      | Ω      | —   |   |
| Wavelength                | 1530                   |      | 1570 | nm     | —   |   |
| Optical input level       | -13                    |      | 2    | dBm    | —   |   |
| Responsivity              | 0.65                   | 0.80 |      | A/W    | —   |   |
| Opt. alarm(Input level)   | ≤ -13dBm               |      |      |        | Normal : Green(LED)<br>Abnormal : Red(LED)  |   |
| ◆Others                   |                        |      |      |        |   |   |
| Laser safety              | Automatic LD shut down |      |      |        | The "Opt Alarm" indicator illuminates green during normal operating conditions. If the system detects a bad fiber connection, the Optical Alarm will display as red and the laser source will shut down until the connection is properly made or the connector is properly cleaned. |   |
| Input AC voltage          | 90                     |      | 250  | V      | 100W max  |   |
| Weight                    |                        |      | 10   | kg     | —   |   |
| RF output connector       | N/J                    |      |      |        | —   |   |
| Optical I/O connector     | SC/APC                 |      |      |        | —   |   |
| External joining terminal | GP-IB                  |      |      |        | —   |   |
| Optical monitor terminal  | BNC/J                  |      |      |        | —   |   |
| AC Power connector        | AC inlet               |      |      |        | —   |   |

## 6.性能 Performance

Table 5

| Item                 | Specification |      |      |       | Remark  |
|----------------------|---------------|------|------|-------|---|
|                      | Min.          | Typ. | Max. | Unit  |   |
| Optical output level | 12            |      | 14   | dBm   | —   |
| Wavelength           | 1545          |      | 1555 | nm    | —   |
| Output return loss   | 14            |      |      | dB    | —   |
| Gain (Output/Input)  | 8             |      |      | dB    | Combination evaluation with the standard machine. (EA-00001)<br>Optical input level:0dBm<br>Modulation factor:35% |
| Gain deviation       |               |      | 10   | dBp-p |   |

## 7.外観図 External

付図: SOEFS-E002-02による。

The probe head is shown in Fig.SOEFS-E002-02.

## 8.検査 Inspection

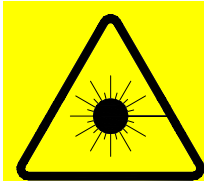
別途打ち合わせによる。

To be discussed.

## 9.セーフティーインフォメーション Safety information

本製品は不可視レーザー光を使用しておりますので、誤ってレーザー光を目に入れますと失明する危険性があります。直接レーザー光を見ないようにして下さい。

This product uses a laser light that is not visible to the human eye, but can cause serious injuries or permanent loss of vision. Please exercise proper caution and do not look directly into the laser light as it may cause blindness.



**Class 1 Laser System ( Embedded Class 3R Laser )**

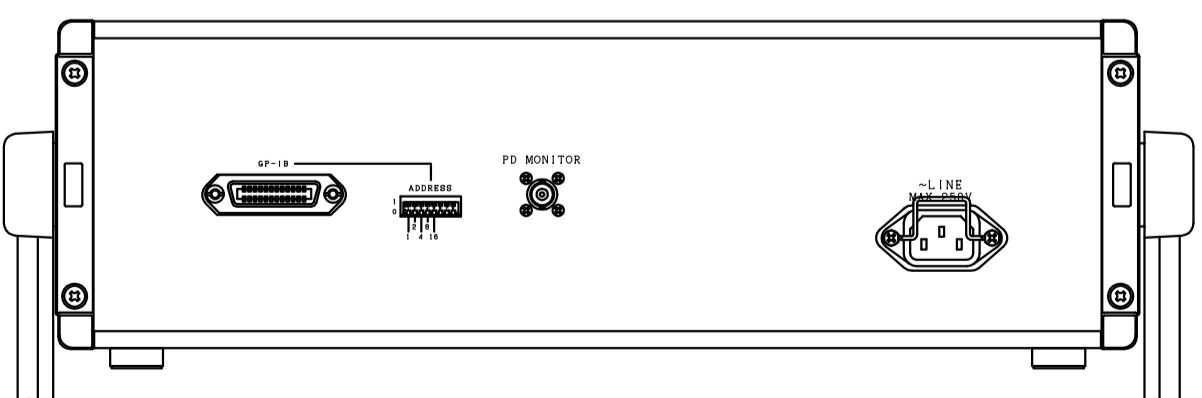
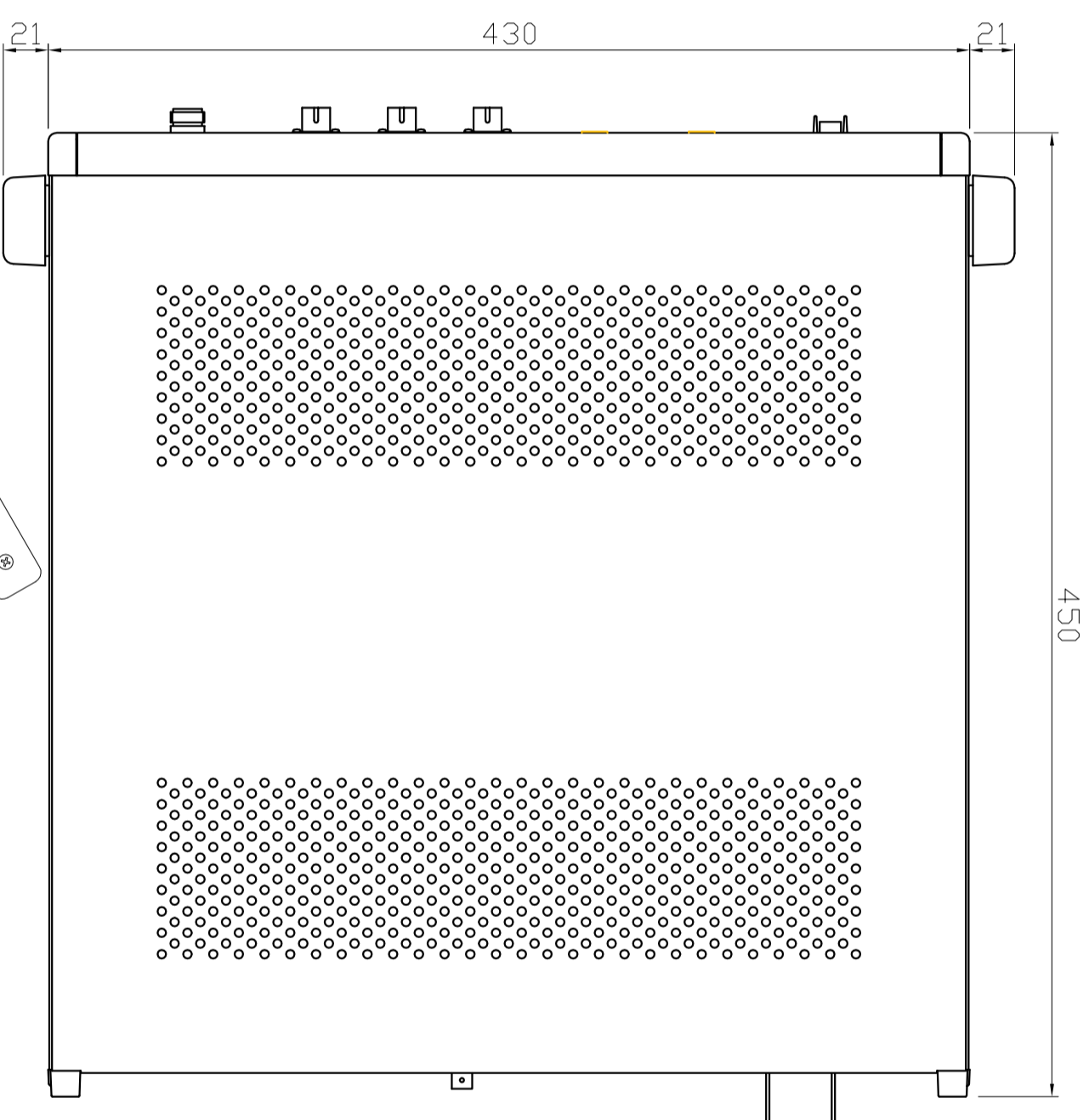
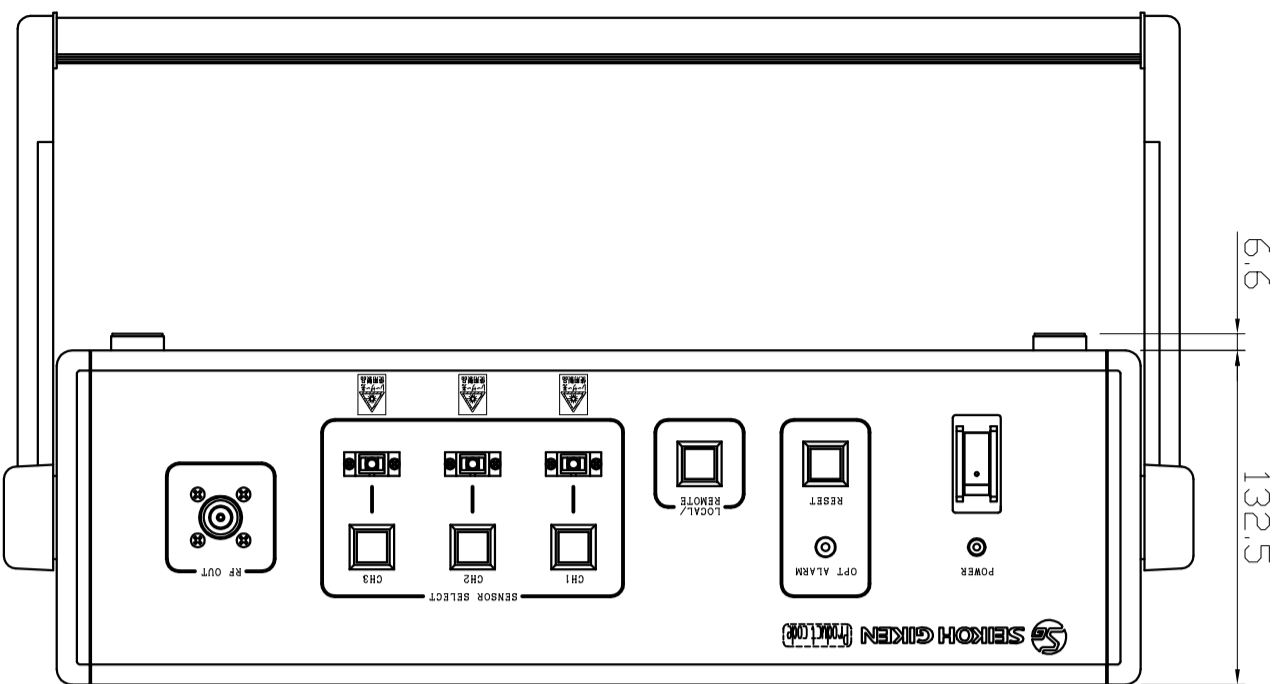
**INVISIBLE LASER RADIATION**

**1550nm 20mW Interlocked**

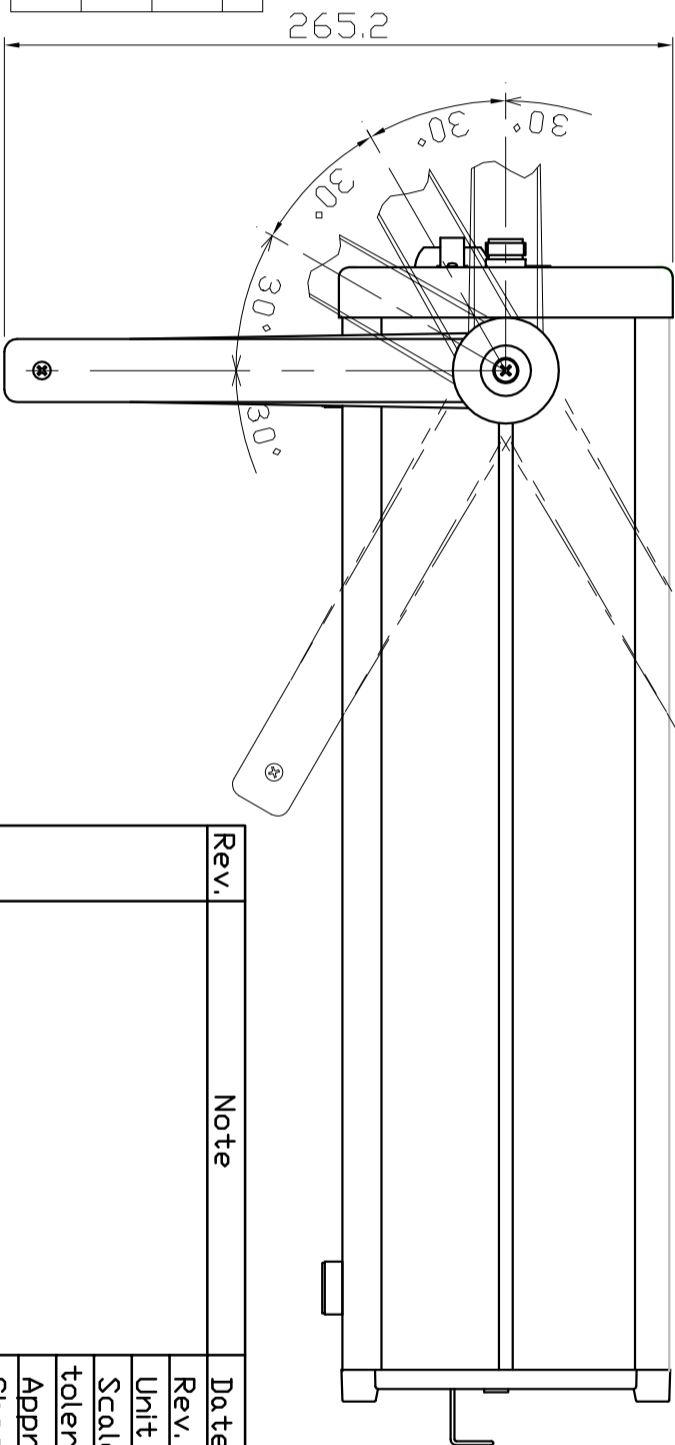
## 10.保証 Warranty

本製品に関し、構成部品の故障や製造上の欠陥に対して納入日から1年間無償修理保証致します。但し、本保証は製品の正常な使用において発生した故障のみに適用致します。

SEIKOH GIKEN warrants the Controllers against defects in parts and workmanship for one full year from B/L date. This warranty shall be invalid by any abuse, misuse, misapplication or improper installation.



|   |              |
|---|--------------|
| Painted color                               | letter color |
| Panel<br>(DFP-white<br>(SG2101))            | Black        |
| Frame<br>(Gray<br>(Munsell color:2, 5Y7/1)) |              |
| Cover<br>(Light gray<br>(Munsell color:N8)) |              |



| Rev.      | Note | Date      | 11.06.17   |
|-----------|------|-----------|------------|
| Rev.      |      | Rev.      | 1.0        |
| Unit      |      | Unit      | mm         |
| Scale     |      | Scale     | 1/3        |
| tolerance |      | tolerance | ±3         |
| Approved  |      | Approved  | Y.Toba     |
| Checked   |      | Checked   | M.Dhizawa  |
| Drawn     |      | Drawn     | K.Fujinami |

Controller  
External

SDEFS-E002-02

